



Curtin University

International student guide

20 24

Make tomorrow better.



First Nations acknowledgement

Curtin University acknowledges the traditional owners of the land on which Curtin Perth is located, the Whadjuk people of the Nyungar Nation, and on Curtin Kalgoorlie, the Wongutha people of the North-Eastern Goldfields; and the First Nations peoples on all Curtin locations.

IN THIS GUIDE

Making a difference	2	Postgraduate courses	36
Start your future career	4	Research degrees.....	44
Scholarships	6	Admission criteria.....	46
Learn in Western Australia	8	Pathways.....	49
Experience Perth	10	Curtin College.....	49
Explore your global opportunities.....	12	Curtin English.....	49
Benefit from immersive learning.....	14	Curtin English scholarship.....	49
Live and learn on campus.....	16	Undergraduate academic requirements	50
Accommodation	18	How to apply	52
Courses	20	Manage your finances.....	54
Double degree combinations	21	Glossary.....	55
Find the course for your dream job	22	Getting to Curtin Perth	56
Undergraduate: single degrees.....	24	Curtin map.....	57
Undergraduate: double degrees.....	32		



CURTIN PERTH ACADEMIC CALENDAR

	SEMESTER 1, 2024	SEMESTER 2, 2024
Orientation Week	19–23 February	15–19 July
Semester starts	26 February	22 July
Semester ends	14 June	8 November

Applications close two weeks before orientation*.
 Visit curtin.edu/calendar for all study periods for 2024.
 Visit curtin.edu/deadlines for application deadlines.

**Application closing dates and orientation dates are subject to change and may vary depending on the course. Dates are for Curtin Perth only. Contact other campuses directly for details.*

Making a difference

With innovation at our heart, advanced facilities and a global community, we're committed to making a difference.

01 Doctors for the future

First Nations man Isaiah Kamid is part of our second cohort of medical students who have graduated with the skills to make a difference in remote and regional areas where there is a shortage of doctors.

02 Exploring space

Following our successful Binar-1 mission, we are planning to launch another six miniature satellites into low Earth orbit. The CubeSats will carry projects designed by Curtin staff and students, including a radiation material test, an autonomous software experiment and a tracking system.

03 Design without waste

Our students are teaming up with industry to tackle challenges in fast fashion, renewable energy, water management and the circular economy, as part of the Curtin Sustainability Challenge.

04 Towards carbon neutral

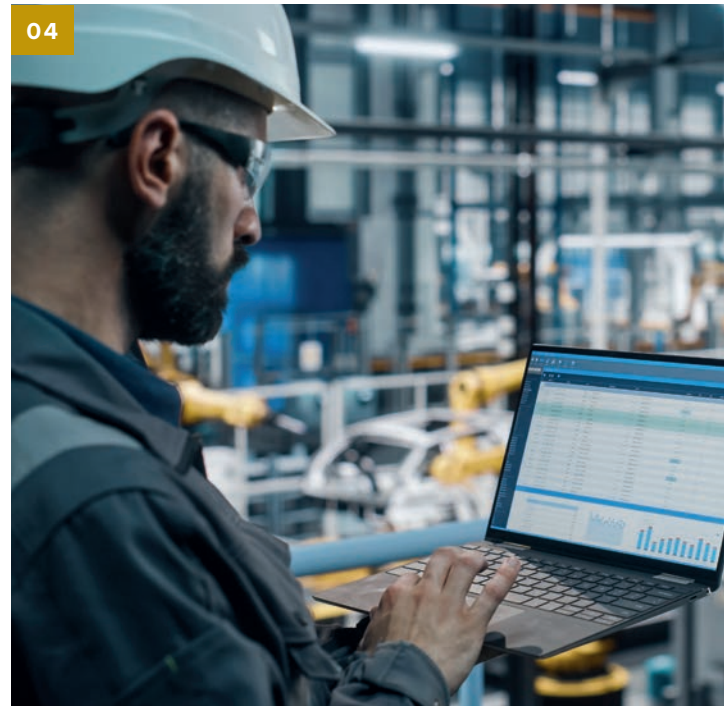
Chemical Engineering graduate Marc Allen is the co-founder of Unravel Carbon, a Singapore-based company that creates net-zero transition plans for businesses and gives them the tools to decarbonise across supply chains.

05 Celebrating disability

Glamour-fashion enthusiast Amy Evans completed a Bachelor of Commerce (Marketing and Advertising) before setting up her digital marketing company, Little Black Dress Digital. Amy's strong social media presence also demonstrates how she's breaking down disability barriers and stereotypes.

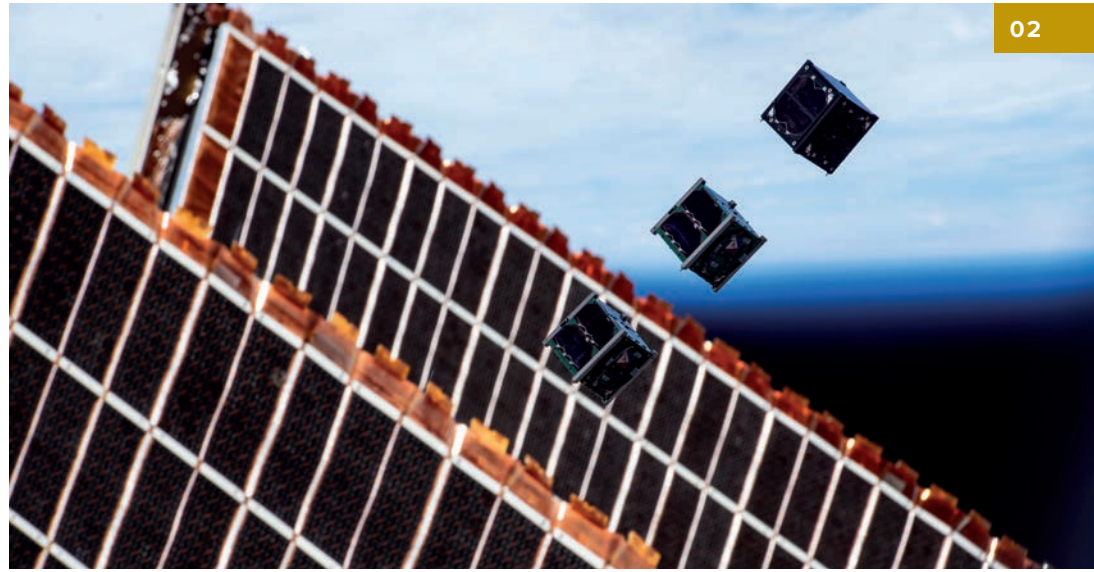
06 Next level AI

The Optus Centre for Artificial Intelligence gives Curtin students the opportunity to design and build next level digital solutions in AI. Projects include using AI to animate your avatar's face in the metaverse and software that can predict, and therefore help prevent, elderly people from falling.





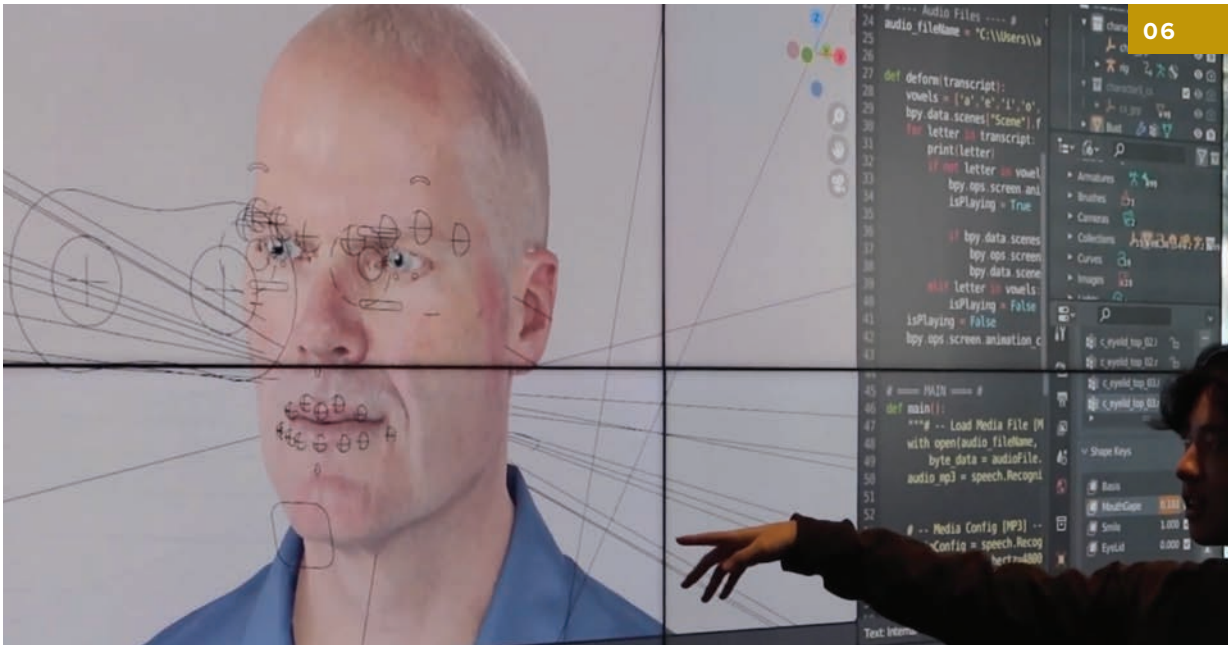
01



02



03



06

Start your future career

Our courses are designed in close collaboration with industry experts to ensure you graduate with the skills and knowledge employers are looking for. Throughout your study, you'll be introduced to professional settings through work integrated learning and internships.

Work integrated learning

Experiential learning is highly valued by employers. You will benefit from Curtin's strong links to business and industry, working on real projects and research initiatives, undertaking internships and attending events and networking opportunities. You could visit industrial sites or plants, complete real projects in collaboration with industry, participate in laboratory work or go on field trips.

Career support

We can help you find part-time work in Perth to support you while you're studying. We also offer career planning services to identify further study or career options, while our Global Careers service can connect you with employers around the world.

Visit curtin.edu/careers.

Internships

Industry placements are offered in many courses, so you can gain professional work experience while you study. Depending on your course, you could intern with one of Curtin's many industry partners, local or national businesses, undertake a healthcare clinical placement or take a practicum in a school.

Business start-ups

Suitable for aspiring entrepreneurs, the weeklong Curtin Ignition training program helps you prepare your business ideas for the commercial environment.

Visit curtin.edu/ignitionprogram.

Volunteering opportunities

If you're keen to help others, Curtin Volunteers! provides volunteering programs that enrich your student experience and develop your capabilities, while also benefiting communities throughout Western Australia.

Visit curtin.edu/volunteering.

Extracurricular activities

Curtin offers a range of extracurricular programs where you can learn new skills, make new friends and get involved in the community. You can choose programs to suit your studies and interests, and you'll receive the Curtin Extra Certificate upon graduation as evidence of your achievements.

Visit curtin.edu/curtin-extra.





A LEADER IN RESEARCH

95% of our research output was rated at or above world standard in the most recent Excellence in Research for Australia results.



TOP 1% IN THE WORLD

Curtin is ranked in the top 1% of universities worldwide in the highly regarded Academic Ranking of World Universities (ARWU) 2022.



#1 FOR ARCHITECTURE IN WESTERN AUSTRALIA

We're ranked number one in Western Australia and in the top 100 universities globally for architecture in the QS World University Rankings by Subject 2022.



EXCELLING IN HEALTH

Curtin's psychology course is ranked 8th nationally in the reputable 2023 Times Higher Education World University Rankings by Subject.



TOP 5 FOR HOSPITALITY AND TOURISM MANAGEMENT

ShanghaiRanking's Global Ranking of Academic Subjects 2022 ranks Curtin in the top five Australian universities for Hospitality and Tourism Management and in the top 50 for universities worldwide.



#1 IN AUSTRALIA FOR MINERAL AND MINING ENGINEERING

We're number one in Australia, and second in the world, for mineral and mining engineering in the QS World University Rankings by Subject 2022.

Scholarships

Scholarships offer financial, academic and career support, giving you more opportunities to gain new skills, expand your horizons and add to your portfolio of achievements.

Scholarships are not loans – the money is given to you provided you fulfil key requirements such as academic performance, work experience or volunteer commitments.

International students can access a range of merit-based and need-based scholarships, including those listed below.



Merit Scholarship

If you're a high-achieving student, you may be eligible for the Global Curtin Merit Scholarship which grants you a 25% discount on your first year of tuition.*



Merit Extension Scholarship

The Master of Business Administration (MBA), MBA Advance and Master of Commerce (Marketing) degrees offer merit extension scholarships, granting a 25% fee discount on tuition in your final year.*



Curtin English Scholarship

Receive a financial credit of up to A\$6,780* towards your undergraduate or postgraduate tuition once you've completed your Curtin English course.*

Eligibility criteria

Scholarships are offered through a competitive process for students who are:

- high-achievers
- studying specific courses
- facing special circumstances.

Each scholarship has different eligibility criteria, application procedures and closing dates, so check these early.

Further information

Scholarships are subject to change. For information on the scholarships available in 2024, visit our scholarships website.

The scholarships website contains:

- up-to-date information and eligibility criteria for available scholarships
- tips for writing a good scholarship application
- a sign-up email alert service that lets you know when a scholarship matching your selection criteria is open for applications. You will also receive a reminder email one week before applications close.

Visit scholarships.curtin.edu.au.





“The Alumni and Family Scholarship scholarship helped me to manage my finances when I first arrived in Perth. It also meant I could be more relaxed about other living costs, and it gave me the motivation to do well in my studies.”

Dharsini Premramesh
Master of International Business
and Entrepreneurship

Learn in Western Australia

Our Western Australian locations are thriving places of community and innovation. You'll be connected with a diverse student community and benefit from a global perspective.

PERTH

Our largest campus is just six kilometres from Perth city. It's a place of inspiration, technology-rich learning spaces, high impact research and exciting activities. All courses are available at Curtin Perth.

PERTH CITY

Curtin Law School in central Perth strengthens our links with the legal profession and the commercial heart of Western Australia.

KALGOORLIE

Our Kalgoorlie campus is located in Western Australia's historic gold mining region. You can study our renowned engineering degrees here, as well as online courses in business, education and health. Curtin Kalgoorlie also houses our Rural Health Campus, which offers regional training opportunities for medical and health science students.



Kalgoorlie Campus



PERTH CITY

CURTIN UNIVERSITY



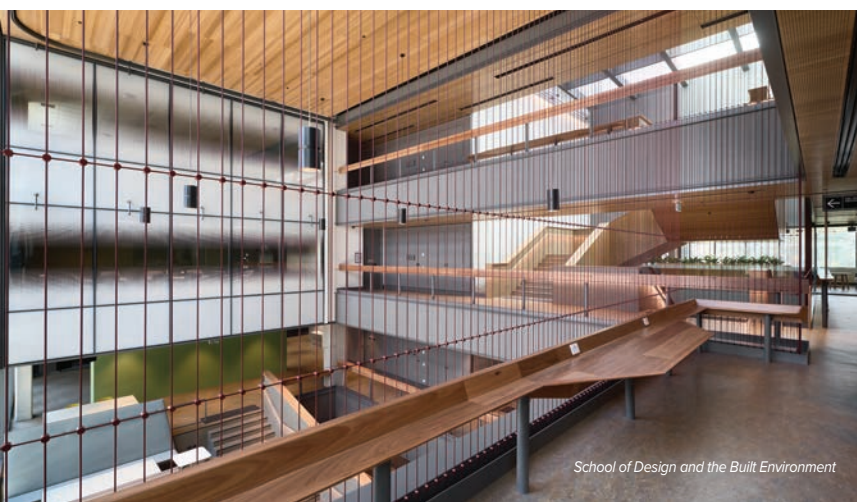
Engineering Pavilion



Curtin Law School



Nesuto Hotel and Zambia Apartments



School of Design and the Built Environment

Experience Perth

Located on the beautiful west coast of Australia, Perth is multicultural, prosperous and safe – an ideal destination for students and tourists alike.

01 Perth CBD

Bold new design projects have transformed the heart of Perth. Enjoy a meal by the waterfront at Elizabeth Quay, explore the state's rich cultural history at the WA Museum Boorla Bardip or take a stroll through beautiful Kings Park, one of the world's largest inner-city parks.

02 Be by the beach

Perth's coast features breath-taking beaches and scenery. Don't forget to visit Wadjemup (Rottnest Island) – a famous holiday destination near Perth that is home to the friendly quokka.

03 Getting around

The metropolitan area is serviced with an extensive road network and public transport.

04 Close to campus

To the north, the suburb of Victoria Park is buzzing with a vibrant array of restaurants, pubs, beautiful parks and recreation areas.

To the south, the Canning River is home to dolphins, pelicans, swans and many other bird species. It's ideal for walking, picnicking and kayaking.

05 Western Australia's best food

Try some of the city's best food at farmers markets, and find gourmet food producers in the Swan Valley.

06 Shopping and culture

Perth is home to Elizabeth Quay, Forrest Place, Murray Street Mall and numerous galleries. The historic port city of Fremantle is only 15 kilometres from Perth, where the Swan River meets the Indian Ocean.

07 Affordable living

Perth has lower living costs than Sydney, Melbourne and Brisbane*. You can apply for one of Curtin's affordable campus accommodation options and enjoy living, socialising and studying in a safe and supportive environment with classes and retail outlets close by.

08 Diverse culture

Western Australia's many culturally and linguistically diverse communities have helped make Perth the vibrant city it is today. There are festivals and events held throughout the year, so you can discover and learn about different cultures, and there are community groups you can join to help you stay linked to your culture.

Perth weather

Perth has a Mediterranean climate.



	High / Low (°C)	
Summer <i>(December to February)</i>	30	17.5
Autumn <i>(March to May)</i>	26	13.7
Winter <i>(June to August)</i>	19	8
Spring <i>(September to November)</i>	23	11.7

Source: australia.com

Perth timezone



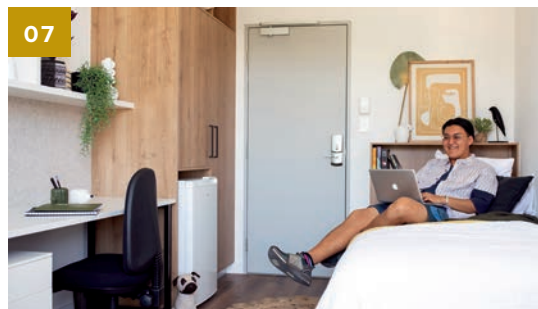
02



05



*Comparative analysis of cost of living. Deloitte Access Economics, 2022. See curtin.edu/cost-living for more detail on Perth living costs.



Explore your global opportunities

● STANFORD UNIVERSITY



As a Curtin student, you'll have the opportunity to study at another Curtin campus or at one of our many partner universities in Africa, Asia, Europe, North America or South America.

You'll get to experience other cultures and build an international network that will prove invaluable both personally and professionally.

We offer a range of global opportunities, including semester exchange, study abroad and overseas summer schools. Our transfer pathway also gives you the flexibility to start your Curtin degree in your home country, before transferring to another Curtin campus with minimal interruption to your studies.

Visit curtin.edu.au/students/experience/global.

01 SINGAPORE

Curtin Singapore is located in one of Asia's major economic hubs, connecting it to the world of international business, and making it the ideal campus to study your commerce degree. Other degrees available include nursing, communications, web media, computing and IT.

Visit curtin.edu.sg.



02 DUBAI

Our Dubai campus gives you the opportunity to study in the heart of Middle Eastern banking, tourism and trade. Its rich culture and economic growth can complement your study in arts, commerce, engineering, or IT and computing.

Visit curtindubai.ac.ae.



03 MAURITIUS

Curtin Mauritius offers courses in design, communications, commerce and science. It delivers a world-class education in a tropical island nation that blends cultures from Europe, Africa and Asia.

Visit curtinmauritius.ac.mu.

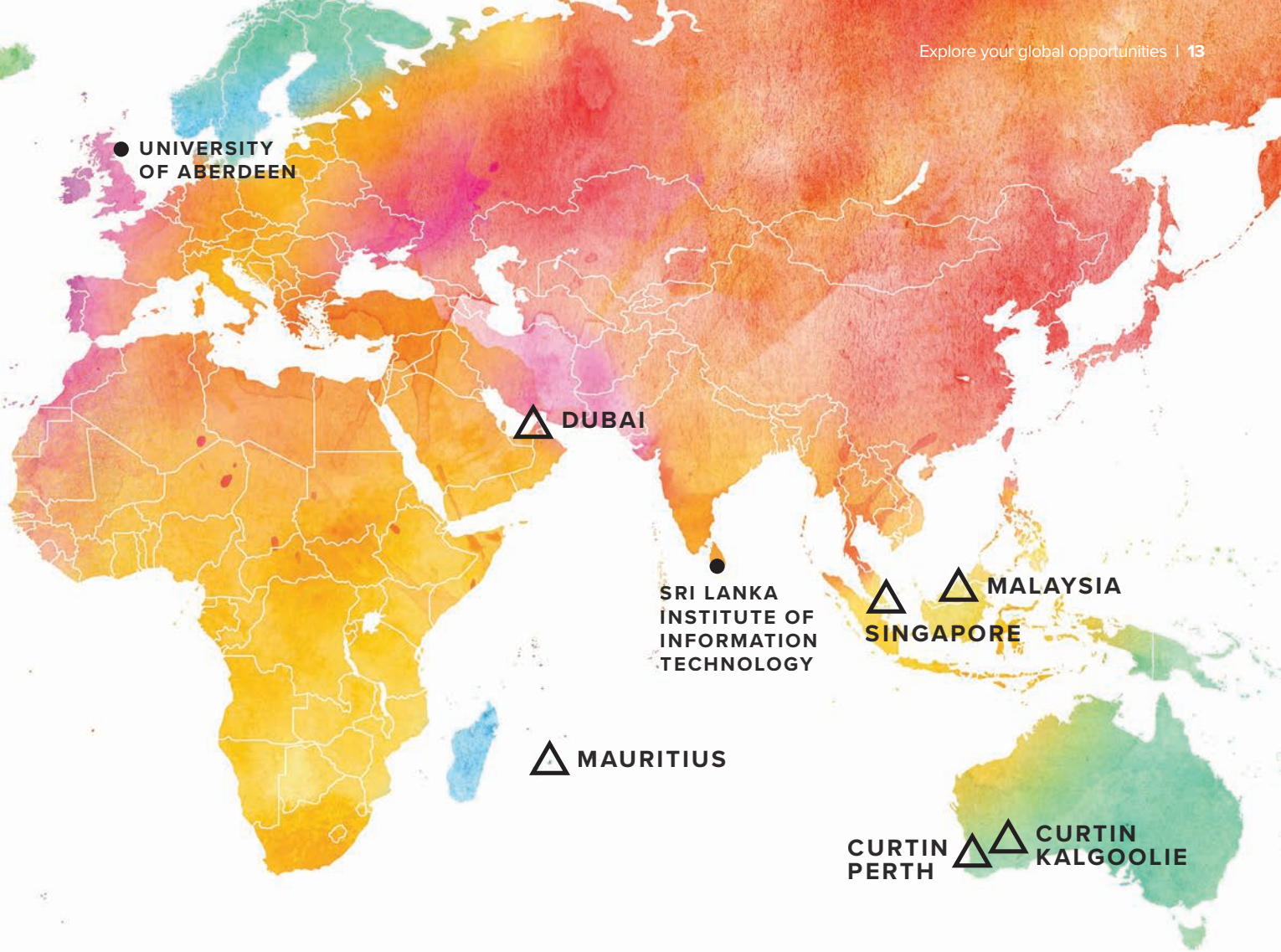


04 MALAYSIA

Located on the island of Borneo, our Malaysian campus is modern and vibrant, featuring lush greenery and lakes. You can study a range of Curtin courses here, including commerce, engineering, science and arts.

Visit curtin.edu.my.





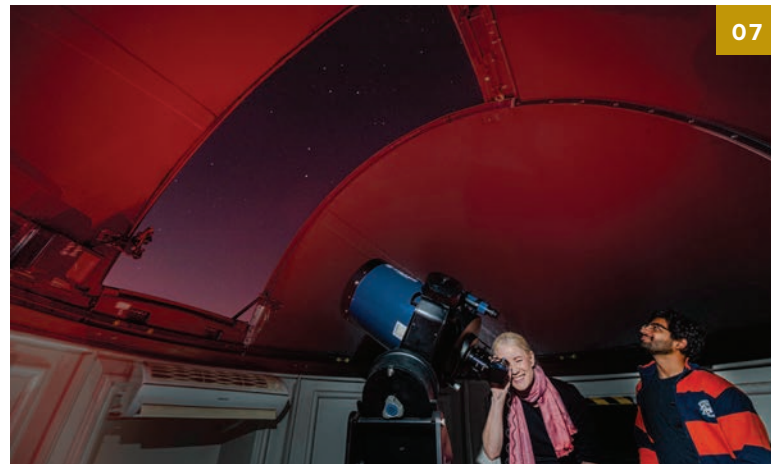
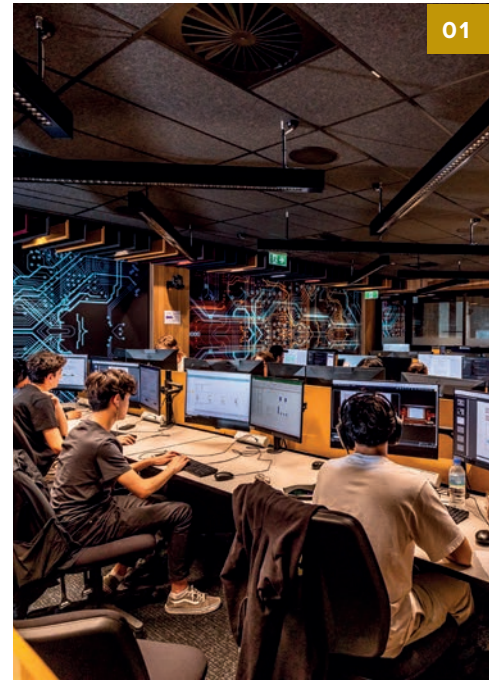
△ Curtin University global campuses ● Partners

▶ ▶ ▶ Visit curtin.edu/goglobal.



Benefit from immersive learning

At Curtin, you'll hone your skills in learning environments that simulate real workplaces, so you can step into your chosen career with confidence.





02

01 Computer Science Labs

An immersive learning facility with a unique design identity and cyber security lab with changeable colour LEDs in each space.

02 School of Design and the Built Environment

The technology-rich, five-storey building is designed with exposed mechanical, electrical and hydraulic services and structural elements to help you understand how buildings function.

03 Jeanette Hackett Moot Court

Take part in simulated court proceedings at our high-tech moot court facility in Perth city and practise your debating and legal skills in global student law competitions.

04 Media Production Studio

Make your mark using interactive media facilities with 4K technology and industry-standard digital systems for recording and post-production editing and sound mixing.

05 Simulated hospital ward

Replicating a real hospital in Perth, our simulated hospital ward features acute medical and surgical areas, a critical-care area, a paediatric area and a general simulation room.



05

06 Industry standard trading software

Commerce and business students can get hands on with Refinitiv Eikon trading and financial analysis software, the tools that professional stock traders use.

07 Astrodome

The Astrodome houses a 12-inch Meade Refractor telescope, which has automatic tracking capabilities, enabling you to capture long exposures of astronomical events.



08



09

08 3D virtual anatomy

Cut, pinch, rotate and zoom on a virtual human body with our Anatomage tables.

09 Curtin Tax Clinic

The Curtin tax clinic is a student-run clinic where you will assist members of the public with their tax return, under the supervision of experienced tax practitioners.

10 Green Energy Electric Park

The GEEP laboratory lets you engage in classes on renewable energy and micro-grids, with seven teaching stations dedicated to seven different types of renewable energy sources and storage.



11

11 PC2 superlab

Our physical containment level 2, or PC2, teaching lab lets you analyse samples and report results in the same way as an industry laboratory. It features advanced equipment to help identify and classify bacteria.

Live and learn on campus





There is a sense of connection and community both in and out of tutorials and lectures, with collaborative learning spaces and outdoor leisure areas and activities to enjoy between classes.

Buy your essentials on campus

Shops on campus stock a variety of textbooks, stationery, magazines, novels, cards, art and computer equipment. There's a dry-cleaning outlet and self-serve printing and binding.

North of campus, the Exchange Precinct is home to a bespoke IGA supermarket, where you can buy fresh food and prepared meals, as well as toiletries, confectionary and other essential goods.

Fun events

Market days, multicultural week, free live music and the Guild Ball are just a few of the amazing events held on campus.

Technological convenience

Wi-fi is accessed across the campus and there are many places on campus to recharge your devices. We also have several computer labs equipped with printing stations, scanners, graphic workstations, smart boards and current software.

Study hard, play hard

Curtin Stadium is the home of sport and fitness on campus, offering you access to:

- a 900m² fully equipped gymnasium
- a group fitness studio
- a specialised studio
- a health and rehabilitation clinic
- vast outdoor recreation spaces
- indoor and outdoor multi use courts.

With a strong focus on enhancing wellbeing and healthy lifestyles, you're encouraged to participate at any level, from spectator and supporter to representative and competitor.

The facilities, services and programs will inspire and engage you, and contribute to your vibrant student experience. Take the opportunity to try new things, move each day and find out there is more to university life than study.

Visit curtin.edu.au/sport.

Food, glorious food

Whether you need coffee or kombucha, a quick sandwich or a hearty hot meal, you can get it on campus. We have an IGA grocer, great cafés, food trucks galore and more options coming.

Explore the library

The newly-renovated TL Robertson Library is a beautiful, light-filled building in which to study and engage with your classmates and friends. You'll love the variety of study spaces – including group areas and an entire floor dedicated to quiet study; the Makerspace with technologies, tools and materials to unleash your creativity, a reading room with tranquil view of the centre of campus, exhibition space, student kitchen, and the Guild café.

Visit curtin.edu.au/library.

Supporting your health and wellbeing

Studying can be challenging at times, so we offer a range of health and wellbeing services based conveniently on campus. These include a physiotherapy clinic, and a medical centre where you can make an appointment to see a doctor, occupational therapist, psychologist, counsellor or social worker.

If you have a disability or you're caring for someone with a disability, you can access support services and assistance to help you succeed at Curtin. Our Student Wellbeing Advisory service also offers free and confidential support for any issue that may be affecting you, no matter how big or small.

Study support

We acknowledge that uni is different to school study, so we offer support to help you transition to university, such as for peer-to-peer tutoring and library help.

Settling in

You'll start your course with Orientation Week, where you will receive lots of support from Curtin Connect and student advisors.

Get the course advice you need

Head to Building 102 Curtin Connect for advice on courses, applications, enrolment, getting your ID card and organising your timetable.

Security and personal safety

Curtin's Safer Community Team provides a range of services to keep you safe on campus, including 24/7 safety presence and availability, security escort services, mechanical assistance, secure card building access and the SafeZone security app. There are also assistant call points located at main entry doors to each campus building.

Accommodation

Living on campus is the ideal way to enjoy an immersive university experience where you can live, study and socialise.

Curtin Perth has six on-campus accommodation options for you to choose from in 2024 – managed by St Catherine’s College and UniLodge. All options are close to the university and various amenities, giving you the safety and convenience of an urban lifestyle, and the opportunity to connect with other residents who come from many parts of the world.

And when you’re ready for a break and want to explore, it’s an easy public transport ride or a short drive to the city, Optus Stadium, the South Perth foreshore, local café strips and major shopping precincts.

Accommodation in Perth is in high demand. We strongly encourage you to apply for on campus accommodation when you apply for your Curtin course.

Benefits of living on campus

Close to amenities

All our accommodation options are a short walk to your classes, giving you more time in your day. You’re also close to public transport and a range of supermarkets, cafés, entertainment, health services and recreational facilities.

Access to extras

Our accommodation is furnished, and you’ll have access to free wifi, an off-peak gym membership at Curtin Stadium, plus all your utilities included in your weekly rent. St Catherine’s College residents also have meals included in the rent. These extras make living on campus competitively priced compared to renting privately.

Independence and friendship

Living in your own space gives you a sense of freedom and independence. You’ll also learn life skills and meet people from different cities, cultures and countries. The friendships and experiences you’ll gain could last you a lifetime.

Better outcomes

A recent US study* found that students who live on campus are more engaged in academic activities and feel more connected to their university community.

*The Case for Campus Housing: Results from a National Survey, 2021.

St Catherine’s College

St Catherine’s College offers a personalised and supportive residential experience that helps you achieve success in your university studies and beyond.

Rent includes meals and academic support tailored to suit the different stages of your university journey, such as free tutoring and formal academic dinners. It features an impressive dining hall, dedicated study spaces, common areas and music rooms.

UniLodge

The five UniLodge properties at Curtin Perth offer a range of independent living options to suit different needs and budgets, including self-contained studios with ensuites and furnished private rooms in shared apartments. When you live on campus with UniLodge, you can enjoy weekly events and activities, have security 24/7, plus you don’t have to pay a bond or security deposit.

Studying in Kalgoorlie?

Agricola is our student accommodation based in Kalgoorlie. It’s located across from the Curtin Kalgoorlie campus and is just a short walk to the town centre. Living at Agricola gives you the ability to meet other students from around the world and make friends while you’re studying.

Alternative accommodation and support

If you want to live off campus, our accommodation website provides information and resources on your options, such as a private rental, house share or homestay with a local family.

Visit curtin.edu/accommodation.

Curtin also works closely with StudyPerth, who can support your move to Western Australia and help you find accommodation.

Visit studyp Perth.com.au.





▶ ▶ ▶ Visit curtin.edu/accommodation.

Courses

Our degrees provide opportunities to choose from a range of subjects, giving you the freedom to study towards your dream career and pursue personal study interests at the same time.

Single degrees

This degree type is three or four years of full-time study in one specific subject. You will learn about a wide range of topics within this subject, but ultimately your studies focus on your chosen area. You'll gain in-depth knowledge and graduate an expert in your field.

Double degrees

Some of our degrees can be paired with another degree to broaden your knowledge. A double degree increases your skills and knowledge across two complementary learning areas, giving you more career choices and the flexibility to adapt to changing employment trends. The condensed program structure means it may take only 12 to 18 months longer than a single degree.

When you study a double degree, you specialise in a major within each degree. You will study more units from the degree listed first in the course title. When you complete your course, you're awarded with two degrees.

Double degree combinations

Here are the different combinations available in a double degree. For admission criteria and prerequisites, find the corresponding single degrees in the pages that follow. The same criteria apply to the double degree.

Not sure you meet Curtin's admission criteria?

We offer two pathways that can help you meet the criteria needed to study at Curtin. See page 49 for more information.



“Curtin has been my dream university to study at ever since my uncle was a student here. I researched all the universities in Western Australia but was most impressed by Curtin's quality facilities, teaching and curriculum. Curtin is also the highest ranked university in Western Australia for architecture and built environment.

The first day I came to Curtin Perth I couldn't believe my eyes – the learning environment was so exciting and gave me a lot of motivation. I know that as a student here I can reach my full potential.”

Phuc Hau Nguyen

Bachelor of Applied Science (Architectural Science)

Double degree combinations

	Bachelor of Commerce	Bachelor of Engineering (Honours)	Bachelor of Information Technology	Bachelor of Laws	Bachelor of Science
Bachelor of Arts/Creative Arts					
» Anthropology and Sociology	●●●●				●●●●
» Chinese	●●●●				●●●●
» Creative Writing	●●●●				●●●●
» Digital and Social Media	●●●●				●●●●
» English and Cultural Studies	●●●●				●●●●
» Geography	●●●●				●●●●
» History	●●●●				●●●●
» International Relations	●●●●			●	●●●●
» Japanese	●●●●				●●●●
» Journalism	●●●●			●	●●●●
» Korean Studies	●●●●				●●●●
» Professional Writing and Publishing	●●●●				●●●●
» Screen Arts	●●●●				●●●●
» Theatre Arts	●●●●				●●●●
Bachelor of Commerce					
» Accounting		●●●●	●●●●	●	●●●●
» Economics		●●●●	●●●●	●	●●●●
» Finance		●●●●	●●●●	●	●●●●
» Human Resource Management			●●●●	●	●●●●
» International Business			●●●●	●	●●●●
» Management			●●●●	●	●●●●
» Marketing			●●●●	●	●●●●
» Taxation			●●●●	●	●●●●
» Tourism and Hospitality			●●●●	●	●●●●
Bachelor of Engineering (Honours)					
» Chemical Engineering	●●●●				●●●●
» Civil and Construction Engineering	●●●●				●●●●
» Electrical and Electronic Engineering	●●●●				●●●●
» Mechanical Engineering	●●●●				●●●●
» Mechatronic Engineering	●●●●				●●●●
» Metallurgical Engineering	●●●●				●●●●
» Mining Engineering	●●●●				●●●●
Bachelor of Information Technology					
» Computer Systems and Networking			●		
Bachelor of Laws	●●●●				●
Bachelor of Science					
» Applied Geology	●				●
» Chemistry	●●				●●
» Coastal and Marine Science	●●				●●
» Computer Science					
» Data Science	●●				●●
» Environmental Biology	●●				●●
» Extractive Metallurgy					
» Health and Safety					
» Health Promotion					
» Mathematics	●●				●●
» Mining					
» Nutrition					
» Physics	●●				●●
» Psychology					

Find the course for your dream job

Curtin degrees are designed to prepare you for a range of industries and roles – even those that don't exist yet.

Discover our wide range of study areas and let your passions and interests guide you to your dream career.



Agriculture, environment and sustainability

Find out how we manage, preserve and protect the living world, and turn your ideas into innovative solutions that address global warming, food production and risks to flora and fauna.

Undergraduate - pages 24 + 32
Postgraduate - page 36
Research - page 44

Education

Teachers pass on knowledge, confidence and learning – both in the classroom and beyond. Would you like to help others fulfil their potential?

Undergraduate - page 26
Postgraduate - page 39
Research - page 44



Business, management and law

Inspire others through leadership, grow your capabilities as a manager, or pursue a career in law. Our courses are practical and applied, offering direct input from industry leaders.

Undergraduate - pages 26 + 32
Postgraduate - page 37
Research - page 44



Health

Our health degrees give you plenty of hands-on experience – through fieldwork and placements in our clinics and research centres, and with our industry partners.

Undergraduate - pages 28 + 34
Postgraduate - page 40
Research - page 44





Information technology

Grow your knowledge in programming computers, administering networks, designing software and multimedia, and use artificial intelligence in real-life situations.

Undergraduate - pages 30 + 34
Postgraduate - page 41
Research - page 44



Engineering, mining and surveying

Develop your problem-solving skills and learn to design, construct and test machines, systems, structures, materials and processes.

Undergraduate - pages 26 + 32
Postgraduate - page 39
Research - page 44



Arts, creative industries, culture and society

Lead with your imagination and hone your creative skills in our excellent facilities. You can learn how to turn your creativity into a viable business and make your mark on the world.

Undergraduate - pages 24 + 32
Postgraduate - page 36 + 38
Research - page 44



Architecture, construction and planning

Can you see the detail and beauty in structures and buildings, both inside and out? Pursue a career to create quality environments in which people can live, work and play.

Undergraduate - page 24
Postgraduate - page 36
Research - page 44



Physical sciences, geoscience and mathematics

Learn in facilities where research and discovery abound, and develop your expertise in future growth areas such as biochemistry, industrial modelling or physics.

Undergraduate - pages 30 + 34
Postgraduate - page 42
Research - page 44



Undergraduate: single degrees

Course	CRICOS	Duration	Intake	Indicative first year fee (AUD) ¹	Indicative total course fee (AUD) ¹
Agriculture, environment and sustainability					
BACHELOR COURSE					
Advanced Science (Honours) Majors: - Agricultural Science - Coastal and Marine Science - Environmental Science	095949E	4 years	Feb	\$36,635	\$146,538
Agribusiness	029345C	3 years	Feb, Jul	\$35,511	\$106,533
Science Majors: - Agricultural Science - Coastal and Marine Science - Environmental Science - Food Science	061600D	3 years	Feb, Jul	\$38,640	\$115,921
HONOURS YEAR					
Science Majors: - Agriculture and Food Science - Environment and Marine Science	061491D	1 year	Feb, Jul	\$40,013	\$40,013
Architecture, construction and planning					
BACHELOR COURSE					
Architectural Science	003868A	3 years	Feb, Jul	\$34,523	\$103,569
Construction Management MAL	010548C	4 years	Feb, Jul ²	\$33,957	\$135,828
Interior Architecture	023967K	4 years	Feb, Jul ²	\$34,523	\$138,092
Urban and Regional Planning	003903C	4 years	Feb, Jul	\$31,778	\$127,112
Arts, creative industries, culture and society					
BACHELOR COURSE					
Arts Majors: - Anthropology and Sociology - Chinese - Creative Writing - Digital and Social Media - English and Cultural Studies - Geography - History - International Relations - Japanese - Journalism - Korean Studies - Professional Writing and Publishing - Security and Strategic Studies	068750M	3 years	Feb, Jul	\$32,083	\$96,248
Communications Media specialisations: - Web Media DUB MAL MAU SIN - Journalism MAL SIN - Corporate Screen Production MAL MAU Design or Business specialisations: - Digital Design MAU - Graphic Communication MAU - Photography - Marketing Foundations DUB MAL MAU SIN - Public Relations MAL	018629D	3 years	Feb, Jul	\$30,722	\$92,167
Creative Arts Majors: - Fine Art - Screen Arts - Theatre Arts	0100633	3 years	Feb, Jul	\$31,973	\$95,918
Design Majors: - Advertising and Design - Animation and Game Design - Design Innovation and Fabrication - Digital Experience and Interaction Design MAU - Fashion Design - Graphic Design - Photography	098137F	3 years	Feb, Jul	\$30,468	\$91,404
HONOURS YEAR					
Arts	078137E	1 year	Feb, Jul	\$30,722	\$30,722

1. The indicative tuition fees are an estimate based on standard full time study load. The tuition fees are subjected to annual review each year and the increment, if any, will not exceed 5% per annum from the preceding year of commencement.

2. July intake is only available to students with sufficient credit for recognised learning.

Admission cut-off scores

ATAR (Aust Yr12)	WAUFP (CPS)	GCE A-Levels/ STPM/ (best of 3 subjects)	HKDSE	IB	Ontario Gr 12	India: CBSE	India: HSC	Sri Lanka	Course prerequisites
95	75	14	25	37	90%	90%	94%	14	Mathematics (including Calculus). For the Environmental Science major, Chemistry is also desired.
70	53	5	15	24	60%	60%	65%	5	Mathematics.
70	53	5	15	24	60%	60%	65%	5	Mathematics.
N/A	N/A	N/A	N/A	N/A	N/A	N/A	N/A	N/A	A Bachelor of Science or equivalent degree in chosen specialisation, with a course weighted average of 65% or above in higher level units.
70	53	5	15	24	60%	60%	65%	5	
70	53	5	15	24	60%	60%	65%	5	Mathematics.
70	53	5	15	24	60%	60%	65%	5	Applicants seeking credit for recognised learning must submit a folio.
70	53	5	15	24	60%	60%	65%	5	
70	53	5	15	24	60%	60%	65%	5	
70	53	5	15	24	60%	60%	65%	5	
70	53	5	15	24	60%	60%	65%	5	
70	53	5	15	24	60%	60%	65%	5	
N/A	N/A	N/A	N/A	N/A	N/A	N/A	N/A	N/A	A course weighted average of at least 65% in an appropriate humanities undergraduate degree.

All courses are offered at Curtin Perth. Courses offered at other campuses are indicated with the relevant icon.

Fees and intake periods are for Curtin Perth. Please contact the relevant campus for course fees and intake periods at other campuses.

DUB Dubai **MAL** Malaysia **MAU** Mauritius **SIN** Singapore **KAL** Kalgoorlie

Course	CRICOS	Duration	Intake	Indicative first year fee (AUD) ¹	Indicative total course fee (AUD) ¹
Business, management and law					
BACHELOR COURSE					
Business Administration MAL DUB	018007A	3 years	Feb, Jul	\$30,978	\$92,935
Commerce <i>Majors:</i> - Accounting DUB MAL MAU SIN - Audit Analytics ² - Business Information Systems MAU - Business Information Systems (Extended) - Business Law MAU - Economics - Finance DUB MAL MAU SIN - Financial Planning ²					
- Human Resource Management DUB MAL MAU - International Business DUB SIN - Logistics and Supply Chain Management MAU SIN - Management MAL MAU SIN - Marketing DUB MAL MAU SIN - Property Investment and Development - Property Development and Valuation (Extended) - Taxation ² - Tourism and Hospitality DUB MAL MAU	013905G	3 years	Feb, Jul	\$30,978	\$92,935
Innovation	112415A	3 years	Feb, Jul	\$36,226	\$108,678
Laws	077962B	3 years	Feb	\$41,104	\$164,414
HONOURS YEAR					
Commerce	078136F	1 year	Feb, Jul	\$30,978	\$30,978
Education					
BACHELOR COURSE					
Early Childhood Education	020852A	4 years	Feb, Jul	\$32,411	\$129,642
Primary Education	020853M	4 years	Feb, Jul	\$32,411	\$129,642
Secondary Education <i>Majors:</i> - Biology - Chemistry - Economics - English - Drama - Health and Physical Education - History - Human Biology - Geography - Mathematics - Media Production and Analysis - Politics and Law - Physics - Psychology - Visual Arts					
	096505C	4 years	Feb, Jul	\$35,660	\$142,639
Educational Studies	095951M	3 years	Feb, Jul	\$32,728	\$98,185
Engineering, mining and surveying					
BACHELOR COURSE					
Engineering <i>Majors:</i> - Chemical Engineering MAL - Civil and Construction Engineering MAL - Electrical and Computer Engineering DUB MAL - Energy Engineering ⁴ MAL - Industrial and Systems Engineering					
- Mechanical Engineering DUB MAL - Mechatronic Engineering - Mining Engineering ³ KAL - Metallurgical Engineering ³ KAL - Software Systems Engineering	072467B	4 years	Feb, Jul	\$37,507	\$150,029
Mine and Engineering Surveying	110733C	3 years	Feb	\$38,453	\$115,359
Science <i>Majors:</i> - Extractive Metallurgy ³ KAL - Mining ³ KAL					
	061600D	3 years	Feb	\$38,640	\$115,921
Surveying (Honours)	102612A	4 years	Feb	\$38,453	\$153,812

1. The indicative tuition fees are an estimate based on standard full time study load. The tuition fees are subjected to annual review each year and the increment, if any, will not exceed 5% per annum from the preceding year of commencement.

2. These courses are only available as part of a double major, which will change the indicative first year fee. For double major combinations, visit curtin.edu.au/study.

3. Your first year of study will be at Curtin Perth. Following that you can go directly to Curtin Kalgoorlie or study your second year in Perth before completing your third and fourth years in Kalgoorlie.

4. The Energy Engineering major in the Bachelor of Engineering (Honours) is only available for first year entry in 2024. Transfer into second year or beyond will not be available until 2025.

Admission cut-off scores

ATAR (Aust Yr12)	WAUFP (CPS)	GCE A-Levels/ STPM/ (best of 3 subjects)	HKDSE	IB	Ontario Gr 12	India: CBSE	India: HSC	Sri Lanka	Course prerequisites
70	53	5	15	24	60%	60%	65%	5	
70	53	5	15	24	60%	60%	65%	5	
70	53	5	15	24	60%	60%	65%	5	
90	70	12	23	33	80%	82.50%	85%	12	
N/A	N/A	N/A	N/A	N/A	N/A	N/A	N/A	N/A	High achievement in an appropriate bachelor degree.
70	53	5	15	24	60%	60%	65%	5	Mathematics is desirable.
70	53	5	15	24	60%	60%	65%	5	Mathematics is desirable.
70	53	5	15	24	60%	60%	65%	5	Mathematics is desired for all majors. For the Biology major: Science is desirable. For the Chemistry major: Mathematics AND Chemistry are required. Mathematics (including Calculus) and Physics is desirable. For the Human Biology major: Mathematics (including Calculus) AND Chemistry AND Human Biology OR Biology is desirable. For the Mathematics major: Mathematics (including Calculus) is required. For the Physics major: Mathematics (including Calculus) AND Physics are required. Chemistry is desirable. For the Psychology major: Science is desirable.
70	53	5	15	24	60%	60%	65%	5	Mathematics is desirable.
80	59	8	18	28	70%	70%	71%	8	Mathematics (including Calculus) AND Physics or Chemistry.
70	53	5	15	24	60%	60%	65%	5	Mathematics.
70	53	5	15	24	60%	60%	65%	5	For the Extractive Metallurgy major: Mathematics. For the Mining major: Mathematics AND Chemistry or Physics.
70	53	5	15	24	60%	60%	65%	5	Mathematics.

All courses are offered at Curtin Perth. Courses offered at other campuses are indicated with the relevant icon. Fees and intake periods are for Curtin Perth. Please contact the relevant campus for course fees and intake periods at other campuses.

DUB Dubai **MAL** Malaysia **MAU** Mauritius **SIN** Singapore **KAL** Kalgoorlie

Course	CRICOS	Duration	Intake	Indicative first year fee (AUD) ¹	Indicative total course fee (AUD) ¹
Health					
BACHELOR COURSE					
Advanced Biomedical Sciences (Honours) <i>Majors:</i> - Clinical Medical Science - Discovery Biomedical Science	102739H	4 years	Feb	\$39,980	\$159,921
Biomedical Sciences	102738J	3 years	Feb	\$38,852	\$116,555
Exercise and Sport Science	077744A	3 years	Feb, Jul ²	\$45,092	\$135,277
Health Promotion	003779B	3 years	Feb, Jul	\$40,352	\$121,055
Health, Safety and Environment MAL	064468A	3 years	Feb, Jul	\$40,352	\$121,055
Health Sciences <i>Stream:</i> - Health Sciences	003691K	3 years	Feb, Jul	\$40,352	\$121,055
Health Sciences <i>Stream:</i> - Pharmacy	003691K	3 years	Feb	\$40,352	\$121,055
Laboratory Medicine	064464E	4 years	Feb	\$38,640	\$154,562
Medical Radiation Science <i>Majors:</i> - Medical Imaging - Radiation Therapy	088215B	4 years	Feb	\$37,374	\$149,494
Medicine and Surgery	105741A	5 years	Feb	\$88,751	\$443,756
Nursing <i>Stream:</i> - Comprehensive	041794K	3.5 years	Feb	\$37,359	\$130,758
Nursing <i>Stream:</i> - Registered nurse conversion Australian registration	041794K	1 year	Jan	\$37,359	\$37,359
Nutrition and Food Science <i>Streams:</i> - Food Science - Nutrition	003887J	3 years	Feb, Jul ²	\$40,352	\$121,055
Occupational Therapy (Honours)	094933K	4 years	Feb	\$42,281	\$169,124
Oral Health Therapy	074565F	3 years	Feb	\$42,005	\$126,016
Pharmacy (Honours)	096304A	4 years	Feb	\$38,147	\$152,586
Physiotherapy (Honours)	108991C	4 years	Feb	\$46,041	\$184,162
Psychology	041070B	4 years	Feb	\$38,377	\$153,506
Psychology and Human Resource Management	080702G	4 years	Feb, Jul	\$35,445	\$141,779
Social Work	068620K	4 years	Feb	\$38,640	\$154,562
Speech Pathology (Honours)	0100583	4 years	Feb	\$40,627	\$162,509
HONOURS YEAR					
Biomedical Sciences	073667G	1 year	Feb	\$38,852	\$38,852
Health Science	093502G	1 year	Feb	\$40,352	\$40,352

1. The indicative tuition fees are an estimate based on standard full time study load. The tuition fees are subjected to annual review each year and the increment, if any, will not exceed 5% per annum from the preceding year of commencement.

2. July intake is only available to students with sufficient credit for recognised learning.

Admission cut-off scores

ATAR (Aust Yr12)	WAUFP (CPS)	GCE A-Levels/ STPM/ (best of 3 subjects)	HKDSE	IB	Ontario Gr 12	India: CBSE	India: HSC	Sri Lanka	Course prerequisites
90	70	12	23	33	80%	82.50%	85%	12	Mathematics (including Calculus) AND Chemistry.
70	53	5	15	24	60%	60%	65%	5	Mathematics.
70	53	5	15	24	60%	60%	65%	5	Mathematics AND Science are desirable.
70	53	5	15	24	60%	60%	65%	5	Mathematics AND Science are desirable.
70	53	5	15	24	60%	60%	65%	5	Mathematics AND Human Biology are desirable.
70	53	5	15	24	60%	60%	65%	5	Mathematics AND Human Biology are desirable.
73	54	6	16	25	63%	62.50%	66.50%	6	Chemistry, Mathematics AND Human Biology are desirable.
90	70	12	23	33	80%	82.50%	85%	12	Physics AND Mathematics (including Calculus).
95	75	14	25	37	90%	90%	94%	14	Chemistry AND completion of the UCAT ANZ and CASPer test prior to application.
70	53	5	15	24	60%	60%	65%	5	Human Biology AND Integrated Science are desirable. You also need to have IELTS 7 in each component or equivalent score in PTE, OET or TOEFL iBT.
N/A	N/A	N/A	N/A	N/A	N/A	N/A	N/A	N/A	A recognised 3-year diploma (or equivalent) AND a minimum of 3 months' full-time work experience as a Registered Nurse in the last 5 years. A resume, statement of employment, job description and overseas nursing registration are also required. In addition, you need to have IELTS 7 in each component or equivalent score in PTE, OET or TOEFL iBT.
70	53	5	15	24	60%	60%	65%	5	Science. Mathematics is desirable.
83	62	9.5	19.5	30	73%	74%	74.50%	9.5	Science.
83	62	9.5	19.5	30	73%	74%	74.50%	9.5	Human Biology OR Biology are desirable.
80	59	8	18	28	70%	70%	71%	8	Mathematics AND Chemistry.
90	53	12	22	33	80%	82.50%	85%	12	Science.
70	53	5	15	24	60%	60%	65%	5	Mathematics is desirable.
70	53	5	15	24	60%	60%	65%	5	Mathematics is desirable.
70	53	5	15	24	60%	60%	65%	5	
80	59	8	18	28	70%	70%	71%	8	Science.
N/A	N/A	N/A	N/A	N/A	N/A	N/A	N/A	N/A	Application into this course is by invitation only. A relevant bachelor degree with a minimum course weighted average of 65%.
N/A	N/A	N/A	N/A	N/A	N/A	N/A	N/A	N/A	Application into this course is by invitation only. A relevant bachelor degree with a minimum course weighted average of 65%.

All courses are offered at Curtin Perth. Courses offered at other campuses are indicated with the relevant icon.

Fees and intake periods are for Curtin Perth. Please contact the relevant campus for course fees and intake periods at other campuses.

DUB Dubai **MAL** Malaysia **MAU** Mauritius **SIN** Singapore **KAL** Kalgoorlie

Course	CRICOS	Duration	Intake	Indicative first year fee (AUD) ¹	Indicative total course fee (AUD) ¹
Information technology					
BACHELOR COURSE					
Advanced Science (Honours) Majors: - Computing - Data Science	095949E	4 years	Feb	\$36,635	\$146,538
Technology (Computer Systems and Networking) MAL	041280C	3 years	Feb, Jul	\$36,562	\$109,685
Computing Majors: - Computer Science - Cyber Security DUB MAL SIN - Software Engineering MAL	0100817	3 years	Feb, Jul	\$34,523	\$103,569
Information Technology DUB MAU SIN	0100818	3 years	Feb, Jul	\$34,523	\$103,569
Science Majors: - Data Science SIN - Information and Communication Technology - Software Development	061600D	3 years	Feb, Jul	\$38,640	\$115,921
HONOURS YEAR					
Science Majors: - Computing MAL - Data Science MAL	061491D	1 year	Feb, Jul	\$40,013	\$40,013
Physical sciences, geoscience and mathematics					
BACHELOR COURSE					
Actuarial Science	038785D	3 years	Feb	\$34,206	\$102,619
Advanced Science (Honours) Majors: - Chemistry - Earth Science - Financial Mathematics - Industrial and Applied Mathematics - Molecular Genetics - Physics	095949E	4 years	Feb	\$36,635	\$146,538
Applied Geology Streams: - Applied Geology MAL - Mining Geology ² KAL	108986M	3 years	Feb, Jul	\$39,379	\$118,138
Multidisciplinary Science	108988J	3 years	Feb, Jul	\$41,174	\$123,523
Science Majors: - Biochemistry - Chemistry - Earth Science - Physics	061600D	3 years	Feb	\$38,640	\$115,921
Science Major: - Mathematics	061600D	3 years	Feb, Jul	\$38,640	\$115,921
HONOURS YEAR					
Actuarial Science (Honours)	066674A	1 year	Feb	\$34,206	\$34,206
Science Majors: - Chemistry MAL - Earth and Planetary Sciences MAL - Geophysics MAL - Mathematical Sciences MAL - Physics MAL	061491D	1 year	Feb, Jul	\$40,013	\$40,013

1. The indicative tuition fees are an estimate based on standard full time study load. The tuition fees are subjected to annual review each year and the increment, if any, will not exceed 5% per annum from the preceding year of commencement.

2. Your first and second year of study will be at Curtin Perth. Your final year is studied in Curtin Kalgoorlie.

Admission cut-off scores

ATAR (Aust Yr12)	WAUFP (CPS)	GCE A-Levels/ STPM/ (best of 3 subjects)	HKDSE	IB	Ontario Gr 12	India: CBSE	India: HSC	Sri Lanka	Course prerequisites
95	75	14	25	37	90%	90%	94%	14	Mathematics (including Calculus).
70	53	5	15	24	60%	60%	65%	5	Mathematics. Calculus is desirable.
80	59	8	18	28	70%	70%	71%	8	For the majors Computer Science and Cyber Security: Mathematics (including Calculus). For the Software Engineering major: Mathematics.
70	53	5	15	24	60%	60%	65%	5	Mathematics.
70	53	5	15	24	60%	60%	65%	5	For the Data Science major: Mathematics (including Calculus). For the majors Information and Communication Technology and Software Development: Mathematics.
N/A	N/A	N/A	N/A	N/A	N/A	N/A	N/A	N/A	A bachelor of science or equivalent degree in chosen specialisation, with a course weighted average of 65% or above in higher level units.
92	72	13	24	34	84%	85%	88%	13	Mathematics (including Calculus).
95	75	14	25	37	90%	90%	94%	14	For the Chemistry major: Mathematics (including Calculus) AND Chemistry. For the majors Financial Mathematics and Applied Mathematics: Mathematics (including Advanced Calculus). For the Physics major: Mathematics (including Advanced Calculus) AND Physics.
70	53	5	15	24	60%	60%	65%	5	Mathematics.
70	53	5	15	24	60%	60%	65%	5	
70	53	5	15	24	60%	60%	65%	5	For the majors Biochemistry and Chemistry: Mathematics AND Chemistry. For the Physics major: Mathematics (including Calculus) AND Physics.
70	53	5	15	24	60%	60%	65%	5	Mathematics (including Calculus).
N/A	N/A	N/A	N/A	N/A	N/A	N/A	N/A	N/A	A Curtin Bachelor of Science (Actuarial Science) or equivalent degree, with a course weighted average of 75% or above AND have passed 6 out of the 8 Part 1 Institute Exemptions.
N/A	N/A	N/A	N/A	N/A	N/A	N/A	N/A	N/A	A Bachelor of Science or equivalent degree in chosen specialisation, with a course weighted average of 65% or above in higher level units.

All courses are offered at Curtin Perth. Courses offered at other campuses are indicated with the relevant icon.

Fees and intake periods are for Curtin Perth. Please contact the relevant campus for course fees and intake periods at other campuses.

DUB Dubai **MAL** Malaysia **MAU** Mauritius **SIN** Singapore **KAL** Kalgoorlie

Undergraduate: double degrees

Bachelor course 1	Bachelor course 2	CRICOS	Duration	Intake	Indicative first year fee (AUD) ¹
Agriculture, environment and sustainability					
Science Majors: - Coastal and Marine Science - Environmental Biology	Arts Majors: - Anthropology and Sociology - Chinese - Digital and Social Media - Geography - International Relations - Japanese - Professional Writing and Publishing	074653F	4 years	Feb	\$33,256
Science Majors: - Coastal and Marine Science - Environmental Biology	Commerce Majors: - Economics - Finance	074654E	4 years	Feb	\$36,423
Arts, creative industries, culture and society					
Arts Majors: - Anthropology and Sociology - Chinese - Creative Writing - Digital and Social Media - English and Cultural Studies - Geography - History - International Relations - Japanese - Journalism - Korean Studies - Professional Writing and Publishing - Screen Arts - Theatre Arts	Commerce Majors: - Accounting - Economics - Finance - International Business - Marketing - Tourism and Hospitality	072465D	4 years	Feb, Jul	\$30,722
Business, management and law					
Law	Arts Majors: - International Relations - Journalism	077965K	4.5 years	Feb	\$30,722
Law	Commerce Majors: - Accounting - Economics - Finance - Human Resource Management - Marketing - Tourism and Hospitality	078482K	4.5 years	Feb	\$30,828
Law	Psychology	096308G	5.5 years	Feb	\$34,629
Engineering, mining and surveying					
Engineering (Honours) Majors: - Chemical Engineering - Civil and Construction Engineering - Electrical and Electronic Engineering - Mechanical Engineering - Metallurgical Engineering - Mining	Commerce Majors: - Accounting - Economics - Finance - Management	066675M	5.5 years	Feb, Jul	\$37,507
Engineering (Honours) Major: - Electrical and Electronic Engineering	Science Majors: - Computer Science - Data Science - Physics	095950A	5 years	Feb, Jul	\$37,507
Engineering (Honours) Major: - Chemical Engineering	Science Major: - Chemistry	050336F	5 years	Feb	\$37,507
Engineering (Honours) Major: - Chemical Engineering	Extractive Metallurgy	043753C	5 years	Feb	\$37,507

1. The indicative tuition fees are an estimate based on standard full time study load. The tuition fees are subjected to annual review each year and the increment, if any, will not exceed 5% per annum from the preceding year of commencement.

Admission cut-off scores											
Indicative total course fee (AUD) ¹	ATAR (Aust Yr12)	WAUFP (CPS)	GCE A-Levels/ STPM/ (best of 3 subjects)	HKDSE	IB	Ontario Gr 12	India: CBSE	India: HSC	Sri Lanka	Course prerequisites	
\$133,025	75	56	7	17	26	65%	65%	68%	7	Mathematics AND one Science subject.	
\$145,694	75	56	7	17	26	65%	65%	68%	7	Mathematics AND one Science subject.	
\$122,889	70	53	5	15	24	60%	60%	65%	5	There may be a portfolio requirement for some major combinations.	
\$153,612	90	70	12	23	33	80%	82.50%	85%	12		
\$154,140	90	70	12	23	33	80%	82.50%	85%	12		
\$207,772	90	70	12	23	33	80%	82.50%	85%	12	Mathematics is desirable.	
\$206,290	80	59	8	18	28	70%	70%	71%	8	Mathematics (including Calculus) AND either Chemistry or Physics.	
\$187,537	80	59	8	18	28	70%	70%	71%	8	Electrical and Electronic & Computer Science: Mathematics (including Calculus) AND either Physics or Chemistry. Electrical and Electronic & Data Science: Mathematics (including Calculus) AND Physics. Electrical and Electronic & Physics: Mathematics (including Calculus) AND Physics.	
\$187,537	80	59	8	18	28	70%	70%	71%	8	Mathematics (including Calculus), Physics AND Chemistry.	
\$187,537	80	59	8	18	28	70%	70%	71%	8	Mathematics (including Calculus) AND either Chemistry or Physics.	

All courses are offered at Curtin Perth. Courses offered at other campuses are indicated with the relevant icon.

Fees and intake periods are for Curtin Perth. Please contact the relevant campus for course fees and intake periods at other campuses.

DUB Dubai **MAL** Malaysia **MAU** Mauritius **SIN** Singapore **KAL** Kalgoorlie

Bachelor course 1	Bachelor course 2	CRICOS	Duration	Intake	Indicative first year fee (AUD) ¹
Engineering (Honours) Major: - Civil and Construction Engineering	Mining	050568A	5 years	Feb	\$37,507
Engineering (Honours) Major: - Mechatronic Engineering	Science Major: - Computer Science	095950A	5 years	Feb, Jul	\$37,507
Health					
Health Promotion	Health and Safety	046654D	4 years	Feb	\$40,021
Nutrition	Health Promotion	046656B	4 years	Feb	\$40,021
Psychology	Commerce Major: - Human Resource Management and Industrial Relations	099598B	5 years	Feb	\$36,423
Psychology	Commerce Major: - Marketing	095948F	5 years	Feb	\$36,423
Information technology					
Technology (Computer Systems and Networking)	Information Technology	102589F	4 years	Feb, Jul	\$35,543
Physical sciences, geoscience and mathematics					
Applied Geology	Commerce Major: - Finance	110731E	4 years	Feb, Jul	\$33,784
Applied Geology	Science Major: - Environmental Biology	110732D	4 years	Feb, Jul	\$38,324
Science Major: - Chemistry	Arts Majors: - Anthropology and Sociology - Chinese - Digital and Social Media - Geography - International Relations - Japanese - Professional Writing and Publishing	074653F	4 years	Feb	\$33,256
Science Major: - Chemistry	Commerce Majors: - Economics - Finance	074654E	4 years	Feb	\$36,423
Science Majors: - Data Science - Mathematics	Arts Majors: - Anthropology and Sociology - Chinese - Digital and Social Media - Geography - International Relations - Japanese - Professional Writing and Publishing	074653F	4 years	Feb	\$33,256
Science Majors: - Data Science - Mathematics	Commerce Majors: - Economics - Finance	074654E	4 years	Feb	\$36,423
Science Major: - Physics	Arts Majors: - Anthropology and Sociology - Chinese - Digital and Social Media - Geography - International Relations - Japanese - Professional Writing and Publishing	074653F	4 years	Feb	\$33,256
Science Major: - Physics	Commerce Majors: - Economics - Finance	074654E	4 years	Feb	\$36,423

1. The indicative tuition fees are an estimate based on standard full time study load. The tuition fees are subjected to annual review each year and the increment, if any, will not exceed 5% per annum from the preceding year of commencement.

Admission cut-off scores											
Indicative total course fee (AUD) ¹	ATAR (Aust Yr12)	WAUFP (CPS)	GCE A-Levels/ STPM/ (best of 3 subjects)	HKDSE	IB	Ontario Gr 12	India: CBSE	India: HSC	Sri Lanka	Course prerequisites	
\$187,537	80	59	8	18	28	70%	70%	71%	8	Mathematics (including Calculus) AND either Chemistry or Physics.	
\$187,537	80	59	8	18	28	70%	70%	71%	8	Mathematics (including Calculus) AND either Chemistry or Physics.	
\$160,083	70	53	5	15	24	60%	60%	65%	5	Science is desirable.	
\$160,083	70	53	5	15	24	60%	60%	65%	5	Science is required.	
\$182,117	70	53	5	15	24	60%	60%	65%	5	Mathematics is desirable.	
\$182,117	70	53	5	15	24	60%	60%	65%	5		
\$142,176	70	53	5	15	24	60%	60%	65%	5	Mathematics. Calculus is desirable.	
\$135,136	70	53	5	15	24	60%	60%	65%	5	Mathematics.	
\$153,295	70	53	5	15	24	60%	60%	65%	5	Mathematics AND one Science subject.	
\$133,025	75	56	7	17	26	65%	65%	68%	7	Chemistry AND Mathematics.	
\$145,694	75	56	7	17	26	65%	65%	68%	7	Chemistry AND Mathematics (Including Calculus).	
\$133,025	80	59	8	18	28	70%	70%	71%	8	Mathematics (including Calculus).	
\$145,694	80	59	8	18	28	70%	70%	71%	8	Mathematics (including Calculus).	
\$133,025	80	59	8	18	28	70%	70%	71%	8	Physics AND Mathematics (including Calculus).	
\$145,694	80	59	8	18	28	70%	70%	71%	8	Physics AND Mathematics (including Calculus).	

All courses are offered at Curtin Perth. Courses offered at other campuses are indicated with the relevant icon.

Fees and intake periods are for Curtin Perth. Please contact the relevant campus for course fees and intake periods at other campuses.

DUB Dubai **MAL** Malaysia **MAU** Mauritius **SIN** Singapore **KAL** Kalgoorlie

Postgraduate courses

Course	CRICOS	Duration	Intake	Indicative first year fee (AUD) ¹	Indicative total course fee (AUD) ¹	Admission criteria ²
Agriculture, environment and sustainability						
GRADUATE CERTIFICATE						
Environment and Climate Emergency	0101367	6 months	Feb, Jul	\$15,234	\$15,234	A recognised bachelor degree in any field OR a minimum of 5 years' relevant work experience, subject to approval.
Food Science and Technology	014167F	6 months	Feb, Jul	\$19,542	\$19,542	A bachelor degree (or equivalent) in science, engineering, nutrition, environmental health, home economics, agriculture or other related field. Applicants with other qualifications and experience are considered on a case-by-case basis.
GRADUATE DIPLOMA						
Environment and Climate Emergency	0101366	1 year	Feb, Jul	\$30,468	\$30,468	A recognised bachelor degree OR a Graduate Certificate in Environment and Climate Emergency from Curtin.
Food Science and Technology	007289K	1 year	Feb, Jul	\$39,083	\$39,083	A bachelor degree (or equivalent) in science, engineering, nutrition, environmental health, home economics, agriculture or other related field. Applicants with other qualifications and experience are considered on a case-by-case basis.
MASTER DEGREE						
Environment and Climate Emergency	0101365	2 years	Feb, Jul	\$30,468	\$60,936	A recognised bachelor degree (or equivalent) in any field (may also require relevant work experience) OR a bachelor honours degree OR a graduate certificate or graduate diploma in environment and climate emergency.
Science (Agriculture and Food Security)	107626K	2 years	Feb, Jul	\$40,565	\$81,131	A bachelor degree in a science field.
Science (Food Science and Technology)	064466C	2 years	Feb, Jul	\$39,083	\$78,167	A bachelor degree (or equivalent), graduate certificate or graduate diploma in science, engineering, nutrition, environmental health, home economics, agriculture or other related field. Applicants with other qualifications and experience will be considered on a case-by-case basis.
Architecture, construction and planning						
GRADUATE CERTIFICATE						
Development Planning	023976J	6 months	Feb, Jul	\$15,914	\$15,914	A recognised bachelor degree (or equivalent) OR relevant, extensive work experience. Applications via this pathway are considered on an individual basis.
MASTER DEGREE						
Architecture	058728C	2 years	Feb, Jul	\$35,831	\$71,663	A recognised bachelor degree in architecture (or equivalent). Entry to the course is competitive and academic achievement in the final 2 semesters of study, or equivalent, is considered. A folio submission may also be required.
Urban and Regional Planning	050344F	1.5 years	Feb, Jul	\$33,075	\$49,613	A bachelor or postgraduate degree with 100 credits (or equivalent) of content closely related to urban and regional planning OR a graduate certificate in development planning with a bachelor degree in any field. Applicants with considerable work/life experience in urban and regional planning will be considered for credit for recognised learning upon completing the Graduate Certificate in Development Planning.
Arts and creative industries						
GRADUATE CERTIFICATE						
Arts Majors: - Professional Writing and Publishing - Creative Writing - Screen Arts - Fine Art	098147D	6 months	Feb, Jul	\$16,144	\$16,144	A recognised bachelor degree (or equivalent).
Design	103009A	6 months	Feb, Jul	\$15,383	\$15,383	A recognised bachelor degree in design or a related field OR work experience in design or a related field OR portfolio showing prior design work.
GRADUATE DIPLOMA						
Design	103010H	1 year	Feb, Jul	\$30,766	\$30,766	A recognised bachelor degree (or equivalent) OR relevant, extensive work experience assessed on a case-by-case basis.

1. The indicative tuition fees are an estimate based on standard full time study load. The tuition fees are subjected to annual review each year and the increment, if any, will not exceed 5% per annum from the preceding year of commencement.

2. This admission criteria is in addition to meeting Curtin's English language proficiency and any other course requirements. See page 46 for more information.

Course	CRICOS	Duration	Intake	Indicative first year fee (AUD) ¹	Indicative total course fee (AUD) ¹	Admission criteria ²
MASTER DEGREE						
Arts <i>Majors:</i> - Professional Writing and Publishing - Creative Writing - Screen Arts - Fine Art	098146E	2 years	Feb, Jul	\$32,288	\$64,575	A recognised bachelor degree or equivalent, and you may require relevant work experience OR a recognised bachelor degree in any field with honours OR a graduate certificate or diploma from a recognised institution.
Design	103008B	2 years	Feb, Jul	\$30,766	\$61,532	A recognised degree in design or a related field OR work experience in design or a related field OR a portfolio showing prior design work.
Business, management and law						
GRADUATE CERTIFICATE						
Business SIN	074652G	6 months	Jan, May, Aug	\$18,386	\$18,386	A recognised bachelor degree and at least 5 years' work experience with at least 3 years at a managerial, supervisory and/or senior professional level OR 8 years' work experience with at least 5 years of managerial experience.
Business Fundamentals	102810F	6 months	Feb, Jul	\$15,759	\$15,759	A bachelor degree in any field OR at least 5 years' relevant work experience.
Corporate Innovation	111434F	6 months	Feb, Jul	\$15,759	\$15,759	A bachelor degree in any field OR at least 3 years' relevant work experience.
Digital Marketing DUB	0100482	6 months	Feb, Jul	\$15,759	\$15,759	A recognised bachelor degree (or equivalent) in any field OR at least 5 years' relevant work experience.
Luxury Marketing Management	110734B	6 months	Feb, Jul	\$15,759	\$15,759	A bachelor degree in any field OR at least 5 years' relevant work experience.
Marketing	044636M	6 months	Feb, Jul	\$15,759	\$15,759	A recognised bachelor degree (or equivalent) in any field OR at least 5 years' relevant work experience.
Professional Accounting	051616A	6 months	Feb, Jul	\$16,705	\$16,705	A recognised bachelor degree (or equivalent) in an unrelated field OR a recognised 4-year overseas qualification in accounting OR 3-to-5 years' relevant work experience.
Project Management MAL	029361C	6 months	Feb, Jul	\$16,285	\$16,285	A recognised bachelor degree (or equivalent) OR 5 years of management experience. Applications via this pathway are considered on a case-by-case basis.
Supply Chain Management SIN	041930G	6 months	Feb, Jul	\$15,759	\$15,759	A recognised bachelor degree (or equivalent) in any field other than logistics, supply chain management or procurement OR at least 5 years' relevant professional or managerial work experience.
Taxation Practice	102740D	6 months	Feb, Jul	\$15,759	\$15,759	A recognised bachelor degree (or equivalent) OR relevant work experience.
GRADUATE DIPLOMA						
Business	006112K	1 year	Jan, May, Aug	\$36,772	\$36,772	A recognised bachelor degree in any field and at least five years' experience with at least three at managerial, supervisory and/or senior professional level.
Legal Practice	096301D	1 year	Feb	\$38,453	\$38,453	A recognised Bachelor of Laws or Juris Doctor (or equivalent) approved under the Legal Profession (Admission) Rules 2009 (WA) OR written approval from the Legal Practice Board of Western Australia to enrol in the Graduate Diploma of Legal Practice course.
Professional Accounting	051622C	1 year	Feb, Jul	\$33,410	\$33,410	A recognised bachelor degree in any field OR a Graduate Certificate in Professional Accounting.
Project Management MAL	027213J	1 year	Feb, Jul	\$32,569	\$32,569	A recognised bachelor degree (or equivalent) OR a Graduate Certificate in Project Management. Applicants in this pathway may be eligible for credit for recognised learning.
MASTER DEGREE						
Accounting	107620E	1 year	Feb, Jul	\$33,410	\$33,410	A recognised bachelor degree in accounting.
Business Administration <i>Majors:</i> - Business Administration SIN - Leadership SIN - Energy Futures	074577B	1.5 years	Jan, May, Aug	\$42,456	\$56,608	A recognised bachelor degree OR a Graduate Certificate in Business AND at least 3 years' relevant work experience at managerial level. Entry to the course is competitive and you will be required to attend an interview in the final stages of application.

All courses are offered at Curtin Perth. Courses offered at other campuses are indicated with the relevant icon.

Fees and intake periods are for Curtin Perth. Please contact the relevant campus for course fees and intake periods at other campuses.

DUB Dubai **MAL** Malaysia **MAU** Mauritius **SIN** Singapore **KAL** Kalgoorlie

Course	CRICOS	Duration	Intake	Indicative first year fee (AUD) ¹	Indicative total course fee (AUD) ¹	Admission criteria ²
MASTER DEGREE (cont.)						
Business Administration Advanced Majors: - Business Administration - Leadership - Energy Futures	093141F	2 years	Jan, May, Aug	\$47,173	\$75,477	A recognised bachelor degree OR a Graduate Certificate in Business AND at least 3 years of subsequent, relevant work experience. Entry to the course is competitive and you will be required to attend an interview in the final stages of application.
Commerce Majors: - Finance - Human Resources - Marketing - Supply Chain Management	078409G	2 years	Feb, Jul	\$34,671	\$69,341	A recognised bachelor degree (or equivalent) in any field.
Finance	103293C	1 year	Feb, Jul	\$31,519	\$31,519	A recognised bachelor degree in finance (or quantitative degree with heavy emphasis on finance) with a course weighted average of at least 65% or equivalent OR a bachelor degree in finance AND 3-to-5 years' relevant work experience.
Human Resources	110825K	1 year	Feb, Jul	\$31,519	\$31,519	A recognised bachelor degree in a related field AND 3 years of relevant work experience.
Innovation and Entrepreneurship	110823A	2 years	Feb, Jul	\$31,519	\$63,038	A recognised bachelor degree in any field.
International Business	110824M	1 year	Feb, Jul	\$31,519	\$31,519	A recognised bachelor degree in any field AND industry experience (2 years working in an assistant or deputy manager and above position).
Marketing	107622C	1 year	Feb, Jul	\$31,519	\$31,519	A recognised bachelor degree in a relevant field AND 3 years' relevant workplace learning.
Science (Minerals and Energy Economics)	072466C	1.5 years	Jan, Sep	\$33,620	\$50,430	An approved bachelor degree and at least 3 years' relevant managerial experience OR a Curtin Graduate Certificate in Business OR a Curtin Graduate Certificate in Mineral and Energy Economics.
Professional Accounting Majors: - Advanced Accounting - CPA Australia - Digital Technologies and Data Management	107625M	2 years	Feb, Jul	\$33,410	\$66,820	A recognised bachelor degree in any field OR a Graduate Certificate or Graduate Diploma in Project Management.
Project Management	098520K	2 years	Feb, Jul	\$32,569	\$65,139	A recognised bachelor degree (or equivalent) OR a Graduate Certificate or Graduate Diploma in Project Management.
Science (Project Management) MAL	027245A	1.5 years	Feb, Jul	\$32,569	\$48,854	A recognised bachelor degree (or equivalent) OR a Graduate Certificate or Graduate Diploma in Project Management.
Supply Chain Management (Professional) SIN	107628H	1 year	Feb, Jul	\$31,519	\$31,519	A recognised bachelor degree in a related field AND 3-to-5 years' of relevant work experience.
Taxation	102741C	1 year	Feb, Jul	\$31,519	\$31,519	A recognised bachelor degree (or equivalent) in taxation OR a recognised bachelor degree (or equivalent) in business, commerce or a related field and 3-to-5 years' relevant work experience OR a Graduate Certificate in Taxation with a course weighted average of at least 65% (or equivalent) and a minimum of 2 years' relevant work experience.
MASTERS DOUBLE DEGREE						
Science (Minerals and Energy Economics), Business Administration	050596G	2 years	Jan, Sep	\$38,453	\$76,906	A bachelor degree and at least 3 years of post-degree relevant work experience (entry is competitive with an interview in final selection stage) OR a Curtin Graduate Certificate in Business OR a Curtin Graduate Certificate in Minerals and Energy Economics.
Culture and Society						
GRADUATE CERTIFICATE						
Digital and Social Media	030948K	6 months	Feb, Jul	\$15,287	\$15,287	A recognised bachelor degree (or equivalent) OR relevant, extensive work experience assessed on a case-by-case basis.
International Relations and National Security	074661F	6 months	Feb, Jul	\$15,910	\$15,910	A recognised bachelor degree (or equivalent) OR relevant, extensive work experience assessed on a case-by-case basis.
Multimedia Journalism	107666B	6 months	Feb	\$15,234	\$15,234	A recognised bachelor degree in an unrelated field OR recent, relevant and extensive work experience.
GRADUATE DIPLOMA						
Digital and Social Media	030949J	1 year	Feb, Jul	\$30,573	\$30,573	A recognised bachelor degree (or equivalent) in any field OR successful completion of units in Curtin's Graduate Certificate in Digital and Social Media or Graduate Certificate in Internet Communications.
International Relations and National Security	074660G	1 year	Feb, Jul	\$31,820	\$31,820	A recognised bachelor degree OR a Graduate Certificate in International Relations and National Security.
Multimedia Journalism	107670F	1 year	Feb	\$31,973	\$31,973	A recognised bachelor degree in an unrelated field.

1. The indicative tuition fees are an estimate based on standard full time study load. The tuition fees are subjected to annual review each year and the increment, if any, will not exceed 5% per annum from the preceding year of commencement.

2. This admission criteria is in addition to meeting Curtin's English language proficiency and any other course requirements. See page 46 for more information.

3. Master of Teaching only available for students studying onshore in Australia. Not available to students who are not in Australia.

4. This course is delivered at Curtin Kalgoorlie campus and you will be based in Kalgoorlie for the entire duration of the course.

Course	CRICOS	Duration	Intake	Indicative first year fee (AUD) ¹	Indicative total course fee (AUD) ¹	Admission criteria ²
MASTER DEGREE						
Digital and Social Media	032988G	1.5 years	Feb, Jul	\$30,573	\$45,860	A recognised bachelor degree (or equivalent) in an any field OR successful completion of units in Curtin's Graduate Certificate in Digital and Social Media.
Human Rights	061485B	1.5 years	Feb, Jul	\$31,920	\$47,880	A recognised bachelor degree (or equivalent) in arts, humanities, psychology, education, social work, law, journalism or health OR a recognised bachelor degree (or equivalent) in any field plus one year of relevant vocational experience OR a bachelor honours degree, graduate certificate or graduate diploma.
Indigenous Australian Cultural Studies	108990D	1 year	Feb, Jul	\$33,620	\$33,620	A bachelor degree in any field.
International Relations and National Security	074662E	1.5 years	Feb, Jul	\$31,820	\$47,730	A 4-year bachelor degree in any field OR a 3-year bachelor degree in any field AND one of the following: honours, a graduate certificate in any field, a graduate diploma in any field or one year of relevant work experience. Applicants who have completed Curtin's Graduate Diploma in International Relations and National Security or the first 4 units in that course will also be considered for entry.
Multimedia Journalism	107623B	1.5 years	Feb	\$31,366	\$47,049	A recognised bachelor degree in an unrelated field.
Multimedia Journalism (Extended)	107624A	2 years	Feb, Jul	\$31,366	\$62,731	A recognised bachelor degree in an unrelated field.
Education						
GRADUATE CERTIFICATE						
Education	102809K	6 months	Feb, May, Aug, Nov	\$16,046	\$16,046	A recognised bachelor degree in any field.
MASTER DEGREE						
Arts (Applied Linguistics)	023985G	1 year	Feb, May, Aug, Nov	\$32,288	\$32,288	A recognised 4-year education/teaching degree (normally Bachelor of Education or combined Bachelor of Science/Bachelor of Education) OR a 3-year bachelor degree (or equivalent) plus either a Graduate Diploma in Education or Master of Teaching (or equivalent) OR a 3-year bachelor degree (or equivalent) plus either a Graduate Certificate in TESOL or a CELTA (Certificate of English Language Teaching to Adults) (or equivalent) OR a 3-year bachelor degree (or equivalent) plus 2 or more years' full-time documented language-teaching experience in the past 10 years OR an honours or master degree.
Education	004005G	1 year	Feb, May, Aug, Nov	\$32,093	\$32,093	A recognised 4-year degree in education or a combined/double education degree OR a recognised 3-year degree in any field plus a minimum 1-year teaching qualification (Graduate Diploma in Teaching or Master of Teaching or equivalent).
Teaching (Early Childhood, Primary, Secondary) ³	098318A	2 years	Feb, May, Aug, Nov	\$32,093	\$64,186	A recognised bachelor degree (or equivalent) AND at least 1 year of study in an area related to one of the early childhood, the primary, or the secondary curriculum. Applicants must also have a current Working with Children Check and have had a recent criminal record screening at the time of enrolment.
TESOL	101413	2 Years	Feb, May, Aug, Nov	\$32,093	\$64,186	A recognised bachelor degree in any field.
Engineering, mining and surveying						
GRADUATE CERTIFICATE						
Minerals and Energy Economics	018030B	6 months	Jan, Sep	\$16,810	\$16,810	An approved bachelor degree AND at least 2 years' post-degree, relevant work experience.
GRADUATE DIPLOMA						
Metallurgy ⁴ KAL	054623M	1 year	Feb, Jul	\$40,449	\$40,449	A bachelor degree in engineering or science, excluding metallurgical fields.
Mining ⁴ KAL	003967J	1 year	Feb, Jul	\$39,714	\$39,714	A bachelor degree in applied geology or civil/geological/geotechnical engineering. Applicants with appropriate relevant work experience plus relevant qualifications will be considered on a case-by-case basis.
Professional Engineering Majors: - Chemical Engineering - Electrical and Electronic Engineering - Mechanical Engineering - Mining Engineering - Petroleum Engineering	098139D	1 year	Feb, Jul	\$42,446	\$42,446	A bachelor degree (or equivalent) in engineering or a related science field.

All courses are offered at Curtin Perth. Courses offered at other campuses are indicated with the relevant icon.

Fees and intake periods are for Curtin Perth. Please contact the relevant campus for course fees and intake periods at other campuses.

DUB Dubai **MAL** Malaysia **MAU** Mauritius **SIN** Singapore **KAL** Kalgoorlie

Course	CRICOS	Duration	Intake	Indicative first year fee (AUD) ¹	Indicative total course fee (AUD) ¹	Admission criteria ²
MASTER DEGREE						
Engineering Management	109150C	1.5 years	Feb, Jul	\$40,497	\$60,746	A bachelor degree (or equivalent) in engineering or construction AND at least 1 year of relevant post-degree work experience.
Professional Engineering <i>Majors:</i> - Chemical Engineering - Civil Engineering - Embedded Systems Engineering - Emerging Power Systems - Electrical and Electronic Engineering - Mechanical Engineering - Metallurgical Engineering - Mining Engineering - Petroleum Engineering	0100657	2 years	Feb, Jul	\$42,446	\$84,893	A 4-year undergraduate qualification in the same field as your chosen major or a related field that is not Washington Accord accredited. Applicants from unrelated engineering fields may be eligible for direct entry to the following majors: Chemical Engineering, Civil Engineering, Mechanical Engineering, Metallurgical Engineering or Petroleum Engineering. This will be assessed on a case-by-case basis.
Health						
GRADUATE CERTIFICATE						
Public Health MAL	079914E	6 months	Feb, Jul	\$20,617	\$20,617	A bachelor degree preferably in health, education, behavioural sciences, social sciences or management.
GRADUATE DIPLOMA						
Health Administration	007874D	1 year	Feb, Jul	\$40,241	\$40,241	A bachelor degree in a health-related field.
Public Health MAL	080069E	1 year	Feb, Jul	\$41,234	\$41,234	A bachelor degree preferably in health, education, behavioural sciences, social sciences or management.
Sexology	068615G	1 year	Feb	\$41,234	\$41,234	A bachelor degree in a health-related field.
MASTER DEGREE						
Advanced Practice (Clinical Leadership) SIN	108520A	1 year	Feb	\$36,603	\$73,206	A bachelor degree in a related health science field with a minimum course weighted average of 70% AND 3 years' postgraduate work experience in a related field.
Clinical Exercise Physiology	097865D	1.5 years	Feb	\$43,439	\$65,158	A bachelor degree (or equivalent) in exercise and sports science with a course weighted average of at least 60%. The bachelor degree must meet the accreditation requirements specified by Exercise and Sport Science Australia (ESSA). If you have completed a non-ESSA accredited undergraduate degree in exercise science or similar field, you must attain a Graduate Entry Assessment through ESSA prior to course admission.
Clinical Physiotherapy <i>Streams:</i> - Continence and Pelvic Health - Musculoskeletal - Sports Physiotherapy	049888F	1 year	Feb	\$45,203	\$45,203	At least a bachelor degree (or equivalent) in physiotherapy AND at least 3 years' relevant clinical experience AND registration as a physiotherapist with the Physiotherapy Board of Australia or eligibility for limited registration for postgraduate training in Australia.
Clinical Psychology	0100584	1 year	Feb	\$39,676	\$39,676	An Australian Psychology Accreditation Council accredited professional competencies qualification such as Curtin's Master of Psychology (Professional), or equivalent. Entry is competitive and shortlisted candidates will be interviewed.
Dietetics	079872K	2 years	Feb	\$41,234	\$82,467	A bachelor degree that meets the Dietitians Association of Australia requirements for entry to a graduate entry master (these requirements specify that 50% of each of the first and second years of undergraduate study must comprise bioscience, chemistry, physiology and biochemistry) AND completed equivalent of 100 credit points of undergraduate study in nutrition at second- and third-year levels. Entry to this course is competitive: a high course weighted average is required and shortlisted candidates will be interviewed.
Health Administration	006110A	2 years	Feb, Jul	\$39,139	\$78,278	A bachelor degree (or equivalent) in a related field OR a bachelor degree (or equivalent) in an unrelated field plus work experience in health administration.
Nursing Practice	064467B	2 years	Jul	\$36,603	\$73,206	A bachelor degree (or equivalent) with a minimum course weighted average of 70% AND completion of a human biology unit and a research unit at tertiary level. Entry to this course is subject to quota.
Occupational Therapy	077383K	2.5 years	Jan	\$47,628	\$111,132	A bachelor degree (or equivalent) preferably in a related field with a course weighted average of 65% AND evidence of studies in the human biosciences (for example, human biology).
Doctor of Physiotherapy (Extended Master)	0100217	3 years	Jan	\$50,853	\$135,608	A bachelor degree (or equivalent) with a minimum course weighted average of 70% AND successful completion of 3 of the following subjects at a bachelor degree level: human musculoskeletal anatomy; human biology/physiology; health research methods or evidence-based practice. Entry to this course is competitive and applicants are encouraged to submit as much information as possible relating to their education and professional background to assist in the evaluation of their application.

1. The indicative tuition fees are an estimate based on standard full time study load. The tuition fees are subjected to annual review each year and the increment, if any, will not exceed 5% per annum from the preceding year of commencement.

2. This admission criteria is in addition to meeting Curtin's English language proficiency and any other course requirements. See page 46 for more information.

Course	CRICOS	Duration	Intake	Indicative first year fee (AUD) ¹	Indicative total course fee (AUD) ¹	Admission criteria ²
Psychology (Professional)	084066J	1 year	Feb	\$37,823	\$37,823	A 4-year Bachelor of Psychology (or equivalent) completed within the past 10 years, approved by the Australian Psychology Accreditation Council. Entry to this course is competitive and shortlisted candidates will be interviewed.
Public Health MAL	064462G	2 years	Feb, Jul	\$41,234	\$82,467	A bachelor degree preferably in health, education, behavioural sciences, social sciences or management, with a history of above-average grades.
Public Health (Practice)	104514J	1.5 years	Feb, Jul	\$41,234	\$61,850	A bachelor degree preferably in health, education, behavioural sciences, social sciences or management, with a history of above-average grades.
Sexology (Professional)	107629G	1.5 years	Feb	\$41,234	\$61,850	A recognised bachelor degree in a related health profession such as medical, social work or welfare studies, education, health promotion, health sciences, psychology, sociology or biological sciences. Applicant interviews will be conducted where required.
Social Work (Qualifying)	0100481	2 years	Jun	\$44,396	\$78,927	A recognised bachelor degree in health or social sciences with a course weighted average of 65%. Entry to this course is subject to quota.
Speech Pathology	033868G	2 years	Jan	\$44,405	\$83,877	A bachelor or honours degree with a minimum course weighted average of 65% AND evidence of studies in human biology at university level.
Information technology						
GRADUATE CERTIFICATE						
Computing	107665C	6 months	Feb, Jul	\$16,915	\$16,915	A bachelor degree that includes linear algebra.
Information Systems and Technology	049883M	6 months	Feb, Jul	\$15,375	\$15,375	A bachelor degree in an unrelated field OR at least 5 years' relevant workplace learning.
Predictive Analytics SIN	092979A	6 months	Feb	\$18,081	\$18,081	A bachelor degree in science, engineering, business or commerce AND university-level study in mathematics, programming or logic systems.
GRADUATE DIPLOMA						
Predictive Analytics	092978B	1 year	Feb, Jul	\$36,162	\$36,162	A bachelor degree in science, engineering, business or commerce AND university-level study in mathematics, programming or logic systems.
Professional Engineering Major: - Software Engineering	098139D	1 year	Feb, Jul	\$42,446	\$42,446	A bachelor degree (or equivalent) in engineering or a related science field.
MASTER DEGREE						
Artificial Intelligence	105742M	1 year	Feb, Jul	\$33,830	\$33,830	A 3-year bachelor degree in information technology, computational science or engineering with at least 2 years' relevant work experience OR a 4-year bachelor degree in information technology or computational science or engineering.
Commerce Major: - Information Systems and Technology	078409G	2 years	Feb, Jul	\$34,671	\$69,341	A recognised bachelor degree (or equivalent) in any field.
Computing Majors: - Artificial Intelligence - Computer Science - Cyber Security	107621D	2 years	Feb, Jul	\$33,830	\$67,660	A bachelor degree in information technology, computer science, or engineering OR a bachelor degree plus demonstrated knowledge and skills in programming, operating systems, and computing mathematics.
Cyber Security	105743K	1 year	Feb, Jul	\$33,830	\$33,830	A 3-year bachelor degree in information technology, computational science or engineering with a minimum of 2 years' relevant work experience OR a 4-year degree in information technology, computational science or engineering.
Information Systems and Technology	049881B	1.5 years	Feb, Jul	\$15,759	\$15,759	A recognised bachelor degree (or equivalent) in a related field OR a recognised bachelor degree (or equivalent) in any field AND a minimum of 5 years' relevant substantial work experience OR a Graduate Certificate in Information Systems and Technology from Curtin.
Predictive Analytics Majors: - Data Science - Finance and Investment Analytics - Internet of Things - Resource Operations Analytics	092977C	2 years	Feb, Jul	\$36,162	\$72,324	A bachelor degree in science, engineering, business or commerce AND university-level study in mathematics, programming or logic systems.
Professional Engineering Majors: - Software Engineering - Telecommunications and Networking Engineering	100657	2 years	Feb, Jul	\$42,446	\$84,893	A 4-year undergraduate qualification in the same field as your chosen major or a related field that is not Washington Accord accredited.

All courses are offered at Curtin Perth. Courses offered at other campuses are indicated with the relevant icon.

Fees and intake periods are for Curtin Perth. Please contact the relevant campus for course fees and intake periods at other campuses.

DUB Dubai **MAL** Malaysia **MAU** Mauritius **SIN** Singapore **KAL** Kalgoorlie

Course	CRICOS	Duration	Intake	Indicative first year fee (AUD) ¹	Indicative total course fee (AUD) ¹	Admission criteria ²
Physical sciences, geoscience and mathematics						
GRADUATE CERTIFICATE						
Geospatial Intelligence	0100582	6 months	Feb, Jul	\$19,962	\$19,962	A bachelor degree in any field. Alternatively, applicants with 3 years of work experience in GIS or remote sensing fields will be considered for entry.
GRADUATE DIPLOMA						
Geospatial Intelligence	0100578	1 year	Feb, Jul	\$39,924	\$39,924	A bachelor degree in any field. Study in mathematics or statistics equivalent to first-year university level is recommended.
MASTER DEGREE						
Geoscience <i>Majors:</i> - Exploration and Mining - Geology - Geophysics	108524H	2 years	Feb, Jul	\$38,950	\$77,900	A bachelor degree in science or a related field. For the Exploration and Mining Geology major, applicants must have studied foundational geoscience units at university level.
Geospatial Intelligence	0100574	2 years	Feb, Jul	\$39,924	\$79,848	A bachelor degree in any field. Study in mathematics or statistics equivalent to first-year university level is recommended.
Science (Actuarial and Financial Science)	054627G	1.5 years	Feb, Jul	\$32,359	\$48,539	A 4-year bachelor or honours degree in mathematics, statistics, science, engineering or finance. Mathematics and statistics competency must be equivalent to Curtin's advanced calculus, linear algebra and statistical methods units.
Science (Industrial Engineering)	107627J	2 years	Feb, Jul	\$39,188	\$78,377	A bachelor degree in science or engineering AND achieved competency in mathematics or a related field to the level of second-year tertiary study.

1. The indicative tuition fees are an estimate based on standard full time study load. The tuition fees are subjected to annual review each year and the increment, if any, will not exceed 5% per annum from the preceding year of commencement.

2. This admission criteria is in addition to meeting Curtin's English language proficiency and any other course requirements. See page 46 for more information.



Research degrees

Course	CRICOS	Duration	Indicative first year fee (AUD)*
MASTER OF RESEARCH			
Agriculture	0100022	2 years	\$38,800
Biomedical Sciences	0100023		\$41,600
Chemistry	0100024		\$38,800
Earth and Planetary Sciences	0100025		\$38,800
Economics and Finance	0100026		\$36,400
Environmental Science	0100027		\$38,000
Fine Arts	0100028		\$36,400
Marketing	0100029		\$38,000
Physics	0100030		\$38,800
Psychology	0102163		\$40,800
Public Health	0100585		\$36,000
MASTER OF PHILOSOPHY			
Accounting MAL	061492C	2 years	\$36,400
Business and Management	107671E		\$36,400
Chemical Engineering	061495M		\$38,000
Chemistry	061496K		\$38,000
Civil Engineering MAL	061497J		\$38,000
Computer Science	061498G		\$38,000
Corporate Sustainability	061499G		\$38,000
Design and Built Environment	107672D		\$36,000
Economics, Finance and Property MAL	061542J		\$36,400
Education	061531A		\$36,000
Electrical and Computer Engineering MAL	061500G		\$38,000
Environment and Agriculture	072468A		\$38,000
Geographic Information Science	074579M		\$38,800
Geology MAL	061503E		\$38,000
Geophysics	061504D		\$38,000
Health Sciences	107675A		\$38,000
Health Studies	107686J		\$36,000
Humanities	061538E		\$36,000
Information Systems	061543G		\$36,400
Law	087732M		\$36,400
Marketing MAL	061545F		\$36,400
Mathematics	061508M		\$38,000
Mechanical Engineering MAL	061509K		\$38,000
Media, Culture and Creative Arts MAL	061535G		\$36,000
Medical Radiation Science	098149B		\$38,000
Mining and Metallurgical Engineering	061514B		\$38,000
Petroleum Engineering	061517K		\$38,000
Physics	061518J		\$38,000
Public Policy	065873B	\$36,400	
Surveying and Mapping	061522B	\$38,800	
DOCTOR OF PHILOSOPHY			
Accounting	043967M	4 years	\$36,400
Applied Geology	043949B		\$38,000
Architecture and Interior Architecture	043932M		\$36,400

*The indicative tuition fees are an estimate based on standard full time study load. The tuition fees are subjected to annual review each year and the increment, if any, will not exceed 5% per annum from the preceding year of commencement.

Course	CRICOS	Duration	Indicative first year fee (AUD)*
Biomedical Sciences	043971D	4 years	\$40,800
Business and Management MAL	107619J		\$36,400
Chemical Engineering	043951G		\$38,000
Chemistry	043968K		\$38,000
Civil Engineering	043952G		\$38,000
Computing	043987G		\$38,000
Construction Management	050585M		\$36,400
Design	043988F		\$36,400
Economics, Finance and Property	043989E		\$36,400
Education	043960G		\$36,400
Electrical and Computer Engineering	043990A		\$38,000
Engineering MAL	050587J		\$38,000
Environment and Agriculture	072469M		\$38,000
Exercise, Sport and Rehabilitation	097862G		\$40,800
Exploration Geophysics	043954E		\$38,000
Health Sciences	043958A		\$36,400
Human Communication Science	043962E		\$36,400
Humanities	043959M		\$36,400
Information Systems	043991M		\$36,400
Law	092772E		\$36,400
Marketing	043994G		\$36,400
Mathematics and Statistics	043955D		\$38,000
Mechanical Engineering	043956C		\$38,000
Media, Culture and Creative Arts	043995G		\$36,400
Medical Radiation Science	043957B		\$38,000
Medicine	0100978		\$41,600
Mining and Metallurgical Engineering	044005J		\$38,000
National Drug Research Institute	043964C		\$36,800
Nursing and Midwifery	043996F		\$36,400
Occupational Therapy	043997E		\$40,800
Petroleum Engineering	006095F		\$38,000
Pharmacy	043998D		\$40,800
Physics	043950J		\$38,000
Physiotherapy	043999C		\$40,800
Psychology	043965B		\$40,800
Public Health	044001B		\$36,400
Public Policy	065874A		\$36,400
Social Sciences	048085E		\$36,400
Social Work and Social Policy	044003M		\$36,400
Spatial Sciences	006092J		\$38,000
Urban and Regional Planning	050586K		\$36,400
DOCTORAL DEGREES			
Business Administration	023971C	3 years	\$36,500
Education	023972B		\$33,500
Sustainable Development	085112M		\$36,000

All courses are offered at Curtin Perth. Courses offered at other campuses are indicated with the relevant icon. Fees and intake periods are for Curtin Perth. Please contact the relevant campus for course fees and intake periods at other campuses.

DUB Dubai **MAL** Malaysia **MAU** Mauritius **SIN** Singapore **KAL** Kalgoorlie



Admission criteria

For admission to Curtin, you must satisfy minimum academic entry requirements and English language requirements. Entry is competitive and levels higher than the minimum may be required for admission to some courses.

Undergraduate admission criteria

To apply for entry to Curtin's undergraduate courses, you need to have achieved the following:

- A recognised education qualification from your home country (refer to table on page 50).
- English language proficiency.
- Course prerequisites.

Postgraduate admission criteria

To apply for entry to Curtin's postgraduate courses, you need to have achieved the following:

- A recognised university degree.
- English language proficiency.
- Course prerequisites.

Research admission criteria

To be eligible for entry to our research courses, you need to have achieved the following:

- A minimum of four years' previous study in a tertiary institution.
- Meet the eligibility criteria of the Graduate Studies Committee for the proposed enrolling area/s.
- Confirmation from the head of your enrolling area that the necessary supervision and facilities can be adequately provided to support your research.
- English language proficiency.

Find a research supervisor

Visit curtin.edu/hdr-supervisors.

English language proficiency

For entry to all Curtin courses, you must be able to demonstrate proficiency in English.

You can demonstrate your English skills through the recognised tests and qualifications in the table on the right. Some courses require a different level of English – these courses are listed in the table, 'Courses with other English language requirements' on page 48.

If you don't meet the English requirements, you may be eligible to enrol in a program with Curtin English. Completing a program at our Curtin English language centre will help you meet the English levels you need to study at Curtin. See page 49 for more information.





General English language entry requirements

English language test	Score
IELTS (International English Language Testing System) Academic - Listening, Reading, Writing, and Speaking - Overall band score	6.0 6.5
GCSE/GCE O-level English/English Language/English Literature/General Paper/ESL	Grade C
GCE Advanced Subsidiary Level English/English Language/English Literature/General Paper/ESL	Grade C
GCE A-level English/English Language/English Literature/General Paper/ESL	Grade E
SPM 1119 English	Grade A+ and CEFR C1
TOEFL (TEST OF ENGLISH AS A FOREIGN LANGUAGE) iBT - Reading - Listening - Speaking - Writing	79 (overall) 13 13 18 21
Pearson Test of English – Academic (PTE-A) - Listening, Reading, Writing, and Speaking - Overall band score	50 58 (overall)
Occupational English Test (OET)	300 overall and 250 in listening, reading, writing and speaking.
WACE Stage 2 or 3 English, Literature or English as an Additional Language or Dialect (EALD)	Scaled score of 50
Western Australian Universities' Foundation Program (WAUFP), English Language and Australian Cultural Studies (ELACS)	50%
South Australian Certificate of Education (SACE) in the subject of English as a Second Language	Score 10 - Band A, B or C
Hong Kong Certificate of Education Examination (HKCEE) English OR Hong Kong Diploma of Secondary Education (HKDSE) English as a core subject	Grade of 4
C2 Proficiency (Formerly known as Cambridge English: Proficiency (CPE)) - Listening, Reading, Writing, and Speaking - Overall score	190 176
C1 Advanced (Formerly known as Cambridge English: Advanced (CAE)) - Listening, Reading, Writing, and Speaking - Overall score	176 169
Successful completion of Curtin's English Language Bridging (ELB) course	Grade B
Successful completion of one semester of full-time study of a bachelor degree course at a university in Australia, New Zealand, United Kingdom and Ireland.	
Successful completion of the full first year of a bachelor degree at a recognised university in the US, Canada, Singapore and South Africa.	
Successful completion of any Australian university English language proficiency program of one semester (six months) full-time in duration or more, that satisfies degree entry requirements at those universities	

Courses with other English language requirements

Course	IELTS (International English Language Testing System) Academic			TOEFL (Test of English as a Foreign Language)
	Writing and speaking	Reading and listening	Overall band score	TOEFL iBT
UNDERGRADUATE DEGREES				
Bachelor of Business Administration Bachelor of Commerce All Advanced engineering, life sciences, geoscience, computing, data science and other courses offered by the Faculty of Science and Engineering, except the Advanced Science degree	6.0	6.0	6.0	68 overall Reading: 13 Listening: 13 Speaking: 18 Writing: 21
Bachelor of Education (Early Childhood Education, Primary Education, Secondary Education)	Writing: 7.0 Speaking: 8.0	Reading: 7.0 Listening: 8.0	7.5	105 overall Reading: 24 Listening: 28 Speaking: 26 Writing: 27
Bachelor of Medicine, Bachelor of Surgery	7.0	7.0	7.0	99 overall Reading: 24 Listening: 24 Speaking: 23 Writing: 27
Bachelor of Advanced Science (Honours) Bachelor of Science (Medical Radiation Science, Nursing, Occupational Therapy, Oral Health Therapy, Pharmacy, Physiotherapy, Social Work, Speech Pathology)	7.0	7.0	7.0	99 overall Reading: 24 Listening: 24 Speaking: 23 Writing: 27
Bachelor of Science (Exercise and Sports Science)	6.5	6.5	7.0	94 overall Reading: 20 Listening: 20 Speaking: 20 Writing: 24
POSTGRADUATE COURSES				
All engineering, life sciences, geoscience, computing, data science and other courses offered by the Faculty of Science and Engineering	6.0	6.0	6.0	68 overall Reading: 13 Listening: 13 Speaking: 18 Writing: 21
All journalism courses	7.0	6.5	7.0	94 overall Reading: 20 Listening: 20 Speaking: 23 Writing: 27
All physiotherapy, pharmacy, occupational therapy, psychology, nursing, social work, speech pathology and dietetics courses	7.0	7.0	7.0	99 overall Reading: 24 Listening: 24 Speaking: 23 Writing: 27
All Professional Writing and Publishing courses	Writing: 7.0 Speaking: 6.0	Reading: 7.0 Listening: 8.0	6.5	89 overall Reading: 24 Listening: 20 Speaking: 18 Writing: 27
Master of Teaching	Writing: 7.0 Speaking: 8.0	Reading: 7.0 Listening: 8.0	7.5	105 overall Reading: 24 Listening: 28 Speaking: 26 Writing: 27



Pathways

If you want to study at Curtin but don't meet the admission criteria, we offer two pathways for entry: Curtin College and Curtin English.

Depending on the requirements of the course you wish to apply for and your current education level, these two pathways can prepare you for direct entry to Curtin.

Curtin College

Curtin College is ideal if you have completed the equivalent of year 11 or 12 in your home country and received a high school graduate certification, but don't meet the criteria for direct entry to university.

Curtin College offers diploma courses that are equivalent to year one of a Curtin University bachelor degree. You will study units that lead to a Stage 2 Diploma qualification, enabling you to gain direct entry into year two of your chosen Curtin course.

Curtin College is based at Curtin Perth, so you will enjoy access to the same services and facilities as Curtin students, making your transition to university a comfortable one.

Visit curtincollege.edu.au.

Curtin English

If you don't meet the English language requirement of your course, Curtin English can help you achieve the level you need for entry to Curtin University or Curtin College.

Curtin English courses can be packaged together with your chosen undergraduate, postgraduate or diploma program to streamline your enrolment and visa application process.

At Curtin English you will do more than improve your English. You'll develop the academic literacy skills which will prepare you to succeed in your future Curtin course.

Curtin English programs

Curtin English offers three overarching programs: General English, Gateway English and English Language Bridging. The English course you need to take is determined by your current English language test result and the level you need for entry to your chosen Curtin course.

Some of the English language test results accepted by Curtin English are:

- International English Language Testing System (IELTS) (General or Academic)
- Test of English as a Foreign Language (TOEFL)
- Pearson Test of English – Academic (PTE).

Use the English Pathway Planner tool on the Curtin English website to find out which Curtin English program is right for you.

If you don't have a recent English language test result, you will need to complete the Password test. This is an online language test provided free of charge by Curtin English to determine your English starting level. Your score can be used for entry into all Curtin English courses. For more information, visit curtin.edu/int-pathways.

Curtin English scholarship*

If you have been offered an English package with your Curtin offer, you are eligible to receive up to A\$6,780 towards your English tuition. For some students, this will cover the full cost of their English course.

This offer is available to international students who are studying Gateway and/or ELB as a pathway to Curtin University.

You don't need to apply for the Curtin English scholarship. You'll find out if you're eligible when you receive your conditional offer from Curtin. From there, you'll simply need to accept your conditional offer and start your Curtin English course outlined in the offer to be placed into the scholarship program.

**Scholarships are subject to change.*

Curtin College pathway to university



Undergraduate academic requirements

The following overseas qualifications achieved at the required level are recognised by Curtin. You may use a recognised education qualification as part of your entry application to a Curtin undergraduate degree.

Minimum academic entry requirements

Country	Qualification and minimum entry requirements
Australia	Completion of Australian Year 12 (VCE, HSC, QCE, WACE, SACE, TCE, NTCE, ACT) with a minimum Australian Tertiary Admission Rank (ATAR) of 70; and a scaled mark of at least 50 in English, Literature, or English as an Additional Language or Dialect.
Bangladesh	Completion of the Bangladesh Higher Secondary Certificate (HSC) with a minimum Grade Point average of 4.0 (70–79%). Separate evidence of English competence is required.
Botswana	Refer to United Kingdom OR successful completion of part one (first two years) of a degree at University of Botswana. English competence will be assessed individually.
Brazil	Successful completion of the first year of a four-year bachelar/bacharelado or licenciatura/licenciado (degree) or título profissional (professional title) from a recognised institution and English competence.
Brunei	Three O-level passes (minimum grade C) and two A-level passes (minimum five points) in the Brunei Cambridge General Certificate of Education (GCE), and English competence.
Canada	Completion of a provincial high school diploma with an average of 60 or better in Grade 12, and including a grade of 60 or better in Year 12 English (except Quebec where separate evidence of English is required).
China	Successful completion of the National College Entrance Examination (NCEE or also known as Gao Kao) and obtain an aggregate of the required individual subjects which is equivalent to 67% of the overall maximum score, or a grade of 322/480, 422/630, 503/750, 543/810 or 603/900 with separate evidence of English competence required OR one year of a bachelor degree at a recognised university and English competence.
Germany	Completion of the Abitur/Zeugnis der Allgemeinen Hochschulreife or Reifezeugnis (secondary school leaving certificate) at Gymnasium with an average grade of 4 including English or separate English competence OR successful completion of the Fachgebundene Hochschulreife with separate evidence of English competency required.
Hong Kong	Completion of the Hong Kong Diploma of Secondary Education (HKDSE) with a point score of 15 from the best five subjects with at least a grade of 4 in English language or with separate evidence of English.
India	Successful completion of the All India Senior School Certificate awarded by the Central Board of Secondary Education (CBSE) or Indian School Certificate (ISC) awarded by Council with a grade average of 60% in the best four subjects and 60% in English or separate evidence of English; OR successful completion of Higher Secondary School Certificate awarded by one of the recognised Higher Secondary Education Boards with a grade average of 65% with separate evidence of English. Grade average requirement may vary by course.

Country	Qualification and minimum entry requirements
Indonesia	Successful completion of Ijazah Sekolah Menengah Atas (SMA) (Certificate of Completion from Academic Senior Secondary School) with an overall average grade of at least 77%. Separate evidence of English competence is required.
Iran	Successful completion of the first year of a four-year bachelor degree at a recognised institution and English competence OR successful completion of a two-year associate degree or higher diploma (after completion of National High School Diploma) from a recognised institution and English competence.
Japan	Successful completion of first year of a Gakushi (bachelor degree) at a recognised institution and English competence OR Certificate of Graduation awarded by a recognised technical/vocational college and English competence.
Kenya	Successful completion of the first year of a bachelor degree at a recognised institution and English competence.
Korea	Completion of High School Diploma with a score of 300 (75%) in the National University Entrance Examination (College Scholastic Ability Test) (CSAT); separate evidence of English competence is required OR completion of one year of a four-year bachelor degree at a recognised university and English competence.
Malaysia	Three credit passes at SPM level and two passes in STPM (minimum 5 points) and English competence OR completion of the Malaysian Independent Chinese Secondary Schools Unified Examination Certificate (UEC) (Senior Middle Level) with 15 points aggregated from the best five academic subjects and English competence.
Mauritius	Three O-level passes (minimum grade C) and two A-level passes (minimum five points) in the Cambridge Higher School Certificate and grade C in O-level English or English literature OR full International Baccalaureate with a minimum total of 24 points from six subjects at one sitting. Three of the subjects must be at the higher level and one of the six subjects should be English.
Myanmar	Successful completion of one year of a four-year bachelor degree or two years of a three-year bachelor degree at a recognised institution with separate evidence of English competence.
Nepal	Successful completion of School Leaving Certificate Examination (Grade XII) awarded by the National Examination Board with at least Cumulative Grade Point Average (CGPA) of 3.0. Separate evidence of English competence is required.
Norway	Completion of the Vitnemål For Videregående Opplæring (Leaving Certificate from Upper Secondary School) with an average grade of 3 plus a grade of 4 or better in English.
Oman	Successful completion of one year of a bachelor degree at Sultan Qaboos University and English competence OR completion of a recognised diploma at a public institution and English competence.

Country	Qualification and minimum entry requirements
Pakistan	Completion of the Pakistan Higher Secondary Certificate/ Intermediate Certificate with at least an average of 75% of the total marks (825 out of 1100), separate English competency is required. This qualification does not satisfy subject prerequisites.
Philippines	Completion of Philippines High School Diploma (Grade 12) (Academic track) with a final result of 80%, and a total score of at least 1000 out of 1600 in the SAT from the same sitting, with a minimum score of 400 in Evidence-Based Reading and Writing, and Math Section. Separate evidence of English competence is required.
Russia	Successful completion of one year of a Diplomb ob okonchaniy vysshego uchebnogo zavedeniya (Diploma of Specialist) at a state institution or fully accredited private institution where separate evidence of English competence is required.
Saudi Arabia	Successful completion of the first year of a four-year bachelor degree at a recognised institution and English competence OR successful completion of a two year diploma or associate degree at a public university and English competence.
Singapore	Three GCE O-level passes (minimum grade C) OR completion of the Integrated Program AND two 'H2' level passes in the Singapore/Cambridge GCE A Level (minimum 5 points). Grade C in O-level English or English literature OR separate evidence of English competence.
South Africa	Completion of the National Senior Certificate with a grade average of Level 4 over six subjects (excluding Life Orientation), including a grade of Level 4 in the English Home Language.
Spain	Successful completion of the two-year Titulo de Bachiller with a minimum final grade average of 7, with separate evidence of English competence.
Sri Lanka	Three O-level passes (minimum grade C) and three A-level passes (minimum 5 points) in the Sri Lankan General Certificate of Education (GCE) (excluding General Paper). Grade C in General English or separate evidence of English competence.
Taiwan	Successful completion of the first year of a four-year bachelor degree at a recognised institution and English competence.
Tanzania	Three passes (minimum grade C) in the Certificate of Secondary Education (CSE) examinations of the National Examinations Council of Tanzania (NECTA) and two principal level passes in the Advanced Certificate of Secondary Education (ACSE) (minimum of one C and one D grade). Grade C or better in CSE English or separate evidence of English competence.
Thailand	Successful completion of one year of a bachelor degree at a recognised institution and English competence.
United Arab Emirates	Successful completion of the first year of a degree at United Arab Emirates University and English competence OR successful completion of a diploma or higher diploma at a recognised institution, and English competence.
United Kingdom	Three GCE O-level/GCSE passes and two GCE A-level passes (minimum 5 points). Grade C or better in GCE O-level/GCSE English, English literature or English language, or separate evidence of English competence.
US	A United States High School or a High School Diploma based on a US curriculum with an average grade of B or better in 12th grade and a total score of at least 1000 out of 1600 in the Evidence-based Reading and Writing and Math in the SAT from the same sitting, with a minimum of 400 in each component OR a composite score of 21 or better in the American College Test (ACT) OR successful completion of the first year of a four-year bachelor degree at a regionally accredited institution.
Vietnam	Completion of the Bang Tu tai or Bang Tot nghiep Pho thong Trung hoc (Vietnamese Upper Secondary School Graduation Diploma) with at least 7.5 in the score for graduation evaluation, separate evidence of English competence is required.

Country	Qualification and minimum entry requirements
Zambia	Refer to United Kingdom OR successful completion of the first year of a degree at University of Zambia or The Copperbelt University, and English competence.
Zimbabwe	Refer to United Kingdom OR completion of five Zimbabwe General Certificate of Education O-level passes and two A-level passes (minimum 5 points) and English competence OR successful completion of the first year of a degree at University College of Rhodesia and Nyasaland, University of Rhodesia or University of Zimbabwe and English competence.

Undergraduate cut-off scores key

The below information relates to the indicative cut-off scores for undergraduate courses listed on pages 24-35.

GCE – General Certificate of Education

STPM – Sijil Tinggi Persekolahan Malaysia

HKDSE – Hong Kong Diploma of Secondary Education

IB – International Baccalaureate

Ontario Gr 12 – Ontario Grade 12

ATAR – Australian Tertiary Admission Rank – applicable to all Australian matriculation

WAUFP – Western Australian Universities' Foundation Program

India (CBSE) – India Senior School Certificate awarded by the Central Board of Secondary Education (CBSE)

India (HSC) – Higher Secondary School Certificate (Standard Year 12 Qualification) awarded by one of the recognised Higher Secondary Education Boards in India

Sri Lanka – GCE A-level issued by the Department of Examinations

Score conversion for Sri Lankan GCE A-Level

A grade = 5 points

B grade = 4 points

C grade = 3 points

S grade = 1 point

Score conversion for GCE A-level

A grade = 5 points

B grade = 4 points

C grade = 3 points

D grade = 2 points

E grade = 1 point

Subject grades conversion for STPM

A = 5 points

A- or B+ = 4 points

B = 3 points

B- or C+ = 2 points

C = 1 point

Note: Scores for individual prerequisites may be taken into consideration for assessment purposes.



How to apply



1. Find a course

Find your course in the guide or at curtin.edu.au/study.

2. Check the admission criteria

Admission is based on achieving the following:

ACADEMIC CRITERIA

Check you meet the specific entry requirements for your course (including prerequisites for undergraduate degrees) at curtin.edu.au/study.

ENGLISH

See curtin.edu.au/english-criteria for your country's equivalent English competency criteria.

OTHER CRITERIA

Some courses require you to provide supplementary information with your application such as a CV, personal statement or professional references. You can find more information at curtin.edu.au/study.

If you are interested in undertaking a Higher Degree by Research course, you must submit an Expression of Interest and receive an invitation from your potential supervisor prior to submitting an application. See study.curtin.edu.au/applying/research/ for more information.

3. Apply

First, get electronic copies of your qualifications and English language proficiency documents.

Applying through an agent: You may prefer to submit an application through a registered Curtin agent. To find an agent in your country, see curtin.edu.au/agents.

Applying online: If you'd rather not apply through an agent, find your course at curtin.edu.au/study and click APPLY NOW. From here, you can begin the online application process. Make sure your documents are ready to upload.

Successful applicants will receive an offer package, which explains how to accept Curtin's offer and how to enrol. When your enrolment has been completed, you'll receive your Confirmation of Enrolment.

Three simple steps to enrol

1. Activate OASIS

You will receive an email to activate your OASIS account, Curtin's online student portal. Here you will find all your official emails, enrolment information and class timetable.

2. Enrol in your units

Once you have logged in to OASIS, you need to complete any pending requests and enrol in your units.

3. Register for classes

Now it's time to register for your classes! When you've completed your class registration, OASIS will generate your timetable.

GETTING READY TO GO!

We want to make your transition to study in Australia as smooth as possible. Use our pre-departure resources to help you prepare for your move to Perth.

Visit curtin.edu/pre-departure.

YOUR STUDENT VISA

Apply for your student visa after you receive your Confirmation of Enrolment.

If you will be under the age of 18 when you start your Curtin course, you must nominate a guardian.

You can find more information about applying for a student visa by searching for 'student visa' on the Department of Home Affairs website.

Visit immi.homeaffairs.gov.au.

WE'RE HERE TO HELP

If you have any questions about admission, our team can help you.

Tel: +61 8 9266 5888

Email: study@curtin.edu.au

FAQ: curtin.edu.au/study/help-support

Web: curtin.edu.au/study



Manage your finances

Before you start your course, consider the financial implications, find out how much it will cost and look at ways to manage your budget.

Tuition fees

You will need to pay tuition fees for each unit you undertake at Curtin. The amount you pay will depend on the course you are studying, the units you enrol in and whether you are a domestic or international student.

The tuition fees (shown in Australian dollars) on pages 24-45 reflect the estimated cost of the first year and total cost of your study. These fees are based on standard full-time study load as per the course structure.

Some courses run on trimesters (three trimesters a year), while some may have a standard load of 75 credits per semester (two semesters a year), therefore the cost of the first year may be slightly lower or higher than the standard 200 credits per year.

The tuition fee is calculated and charged on a semester or trimester basis. All fees are subject to annual increases of no more than five per cent.

Our fees and charges web page shows the required student contribution for every unit.

For more information on fees, visit curtin.edu/int-fees.

Incidental fees

Some courses require compulsory additional payment for retainable materials and course-related fees. These are known as essential incidental fees, and will be provided in your Letter of Offer. Some individual units may have optional fees for course materials and other course-related items.

Refund agreement

The categories under which Student Administration and Fees will assess an application for refund are laid out in the University's International Student Refund Agreement. The agreement is supplied to you with your Letter of Offer and can also be accessed online at curtin.edu/fees-refunds, where you can also view the most up-to-date information as the policy is subject to change.

Other expenses

Tuition fees do not cover the cost of some items required for studying a particular unit or course. Examples of these items include but are not limited to:

- art supplies
- field trips
- first aid courses
- lab coats
- textbooks
- Working With Children Check.

You may also incur day-to-day expenses, which include but are not limited to parking, transport, food and recreation costs.

Curtin Student Guild

The Guild provides comprehensive education, welfare and social services to its members. If you become a full Guild member, you can take advantage of discounts both on and off campus. In conjunction with the Curtin Bookshop, the Guild offers bookshop grants to students in need of financial assistance. The Guild also offers tax and budgeting advice.

Elite athletes

Elite athletes may be eligible for funding support via:

- Elite Athlete Grant – awarded annually to student athletes in the Elite Athlete Program who display sound academic results while competing in their respective sports.
- Subsidies to assist student athletes in representing Curtin at the Australian University 'Nationals', World University Games/ Championships and other events.
- Free Curtin Stadium gym memberships.

Visit curtin.edu.au/sport/competitive-sport/elite-athletes.



Glossary

Course types

Bachelor degree

The standard university award recognised worldwide for successfully completing an undergraduate course.

- **Double degree:** Studying two complementary bachelor degrees concurrently. For example, Bachelor of Laws and Bachelor of Arts.
- **Honours:** Additional research and coursework at an advanced level.

Postgraduate degree

A higher degree qualification and subject specialisation that can be studied once you have completed a bachelor degree.

Undergraduate study

Education that leads to your first qualification from a university, usually a bachelor degree.

Course structure

Clinical placement

Working as part of a team in a clinical setting, under supervision.

Fieldwork

An umbrella term for any approved practical work, teaching, study, volunteer or research activity, outside the normal place of University business. Fieldwork encompasses clinical placements, work placements, practicums, study tours and field trips.

Major

A series of more than eight units in the same area within a bachelor degree. A major includes at least two units at final-year level.

- **Double major:** Studying two majors within a degree course. For example, Bachelor of Commerce (Economics and Finance).

Professional placement/internship

Working in a professional environment to extend your knowledge and practical skills.

Specialisation

A specialisation is a set of four units in the same discipline. It may complement your bachelor degree or major, or be from a completely different discipline. For example, you may study a Bachelor of Commerce (Marketing) and complement this with a humanities specialisation such as Korean Studies.

Stream

A series of six units in the same discipline.

Unit

A component of a course that covers one subject area in detail. A unit may comprise lectures, tutorials, class presentations, group work, computer lab sessions, case studies, workplace assignments and exams.

- **Core unit:** A compulsory unit, which is specified in the course outline.
- **Elective unit:** A unit that can be chosen from any discipline as long as you meet the prerequisites.
- **Optional unit:** A unit that you choose from a specified list provided in the course outline.

Course essentials

ATAR

The Australian Tertiary Admission Rank, used for allocating places in university courses.

- **Guaranteed ATAR:** A rank that guarantees you a place on the course provided you meet the course prerequisites and English proficiency requirements.
- **Minimum ATAR:** The lowest rank you need to be considered for entry to a course.

Accreditation

The formal recognition of a course by an accrediting body.

Professional membership

Eligibility to access services that support professionals in that field.

Professional recognition

A formal acknowledgement of your professional status, which may be required to practise in your field.

Duration

The time it will take to complete the course if you study full-time.

Intake

The semester or trimester when you can begin studying the course.

Location

Curtin campuses that offer the course.

Portfolio entry

A pathway into Curtin's courses if you're taking General subjects at high school, or are studying a combination of ATAR, General and/or VET certificates. It is also suitable if you've finished school without an ATAR.

Prerequisite

A subject or unit you must complete before starting a course or taking a higher-level unit.

STAT

The Special Tertiary Admissions Test (STAT) is a national test for those who don't meet university admission criteria. At Curtin, STAT can be used by domestic students to meet entry criteria for some courses, or to satisfy the University's English proficiency requirements.

Visit tisc.edu.au/static/guide/stat.tisc

Study mode

How much study you undertake in a semester or a trimester.

- **Domestic students:** Full-time study is three or four units per semester. Part-time study is one or two units per semester. Studying part-time reduces your weekly workload but extends the duration of your course.
- **International students:** International students studying in Australia on a student visa must study four units per semester for most courses. A small number of courses allow a study load of three units.

Other university terms

Advanced standing / credit for recognised learning

Recognition of any previous study or work experience you have that may exempt you from having to study some units of your degree.

Faculty

A teaching area comprising university schools and disciplines.

OUA

Open Universities Australia.

Semester

A 16-week study period. There are two semesters per calendar year.

TISC

The Tertiary Institutions Service Centre processes university applications for domestic students on behalf of the four public Western Australian universities. It also administers STAT.

Trimester

A 14-week study period. There are three trimesters per calendar year.

WACE

Western Australian Certificate of Education.

Getting to Curtin Perth

Curtin is located just six kilometres from the city centre. There are several easy, safe, affordable and environmentally friendly ways to get to and around campus.

Parking

Our pay-as-you-go parking system means you only pay for the time you park on campus. Download CelloPark from the App Store or Google Play and you'll be ready to park.

Transperth buses

More than 500 buses stop at Curtin each weekday during semester. Curtin has two main bus terminals: Curtin Bus Station, which is located on the east side of campus, and the new Curtin Central Bus station, located on the campus' north-west side.

Two high-frequency bus routes – 100 and 101 – connect Curtin with the Canning Bridge train station. Routes 998 and 999 connect Curtin with Oats Street train station.

The CircleRoute buses, which run between Perth's universities, train stations and shopping centres, leave every 15 minutes between 6:30am and 8pm.

Transperth travel concessions are available on request to all full-time students.

Curtin shuttle buses

We provide a free hail-and-ride bus service for students living in Waterford, Bentley, Victoria Park and South Perth. Known as Curtin Access Bus Service (CABS), it runs during semester on weekdays.

There's even a CABS smartphone app that provides live GPS tracking, route mapping and access to timetables.

Trains

Mandurah Line

Many Perth – Mandurah trains stop at the Canning Bridge train station, where you can catch a connecting Transperth bus to Curtin. Buses run every seven to eight minutes during peak times.

Armadale Line

Many Perth – Armadale trains stop at Oats Street train station, where you can catch a connecting Transperth bus to Curtin.

Cycling

In addition to the many bicycle racks, secure bicycle pods are an increasingly common feature on campus. Showers are available at some bicycle enclosures. Entry to the facilities is by swipe card access, available from Curtin Security.

1 Exchange Precinct

Exchange is our community-focused innovation precinct, home to St Catherine's College and Twin Dolphin Hall student accommodation, and the School of Design and the Built Environment.

2 Curtin Stadium

The stadium includes a fitness centre and facilities for tennis, basketball, volleyball, table tennis, badminton, netball, futsal, floorball and group fitness classes.

3 Guild Precinct

The Curtin Student Guild provides educational, commercial and social services to its members. It also operates many services on campus including cafés and cafeterias, The Tav, second-hand bookshop, Curtin Concept store, and the Copy & Design Centre.

4 Main Café and Common Ground Café

There are 12 food outlets at the main campus and several food trucks that change locations daily throughout semester.

5 Curtin Connect

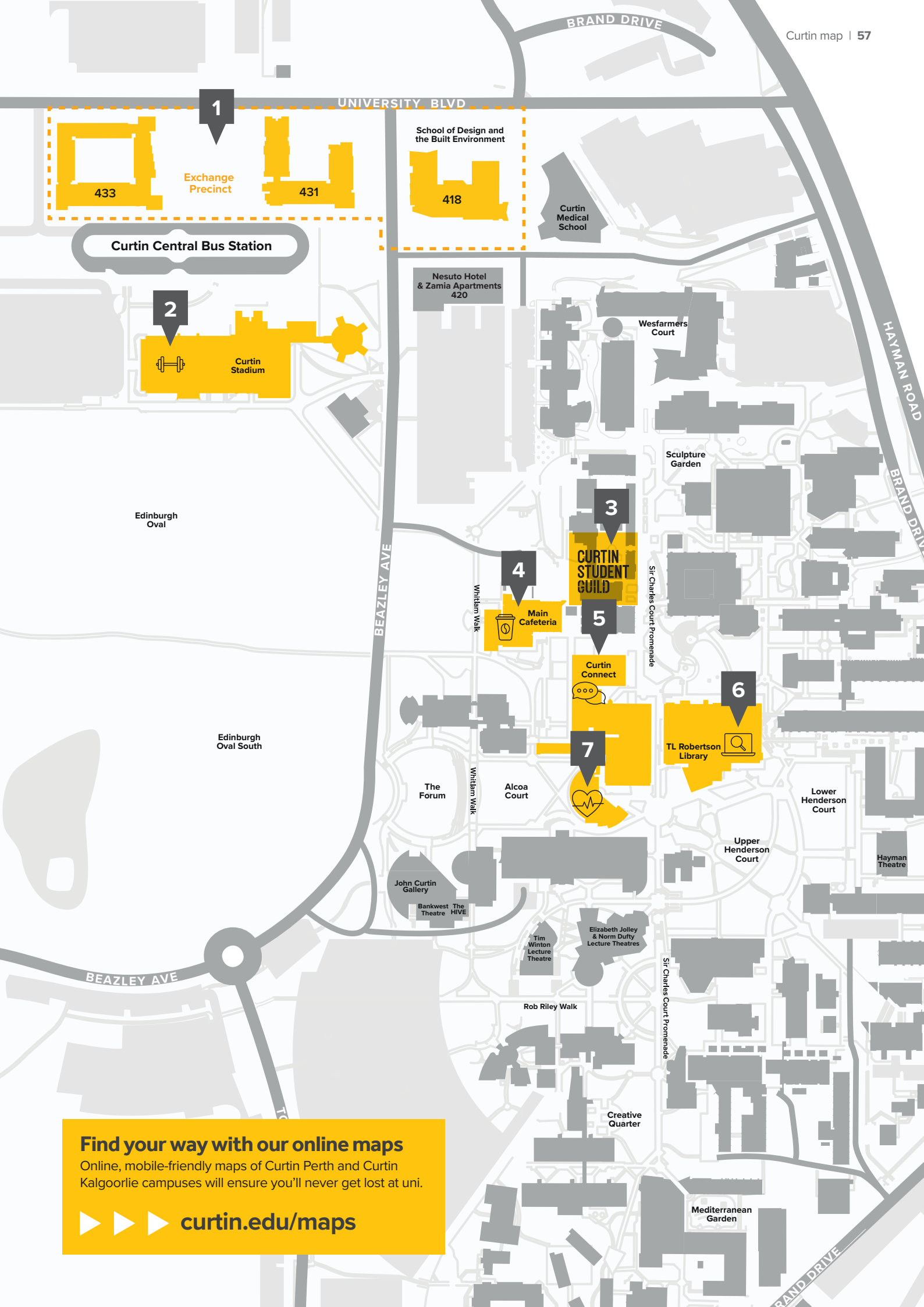
This is the first point of contact for all queries from current and future Curtin students and parents. Here you can speak to experts on courses, admissions, housing, enrolment and careers.

6 Robertson Library

The Robertson Library is spread over five levels and includes the Bookmark Café, Lounge, iZone and wireless internet. During semester, it's open 24/7.

7 Health Services Centre and Counselling Service

The centre includes a medical centre where you can visit either a doctor or nurse. You'll also have access to psychologists and social workers.



1

Exchange Precinct
433 431 418

School of Design and the Built Environment

Curtin Medical School

Curtin Central Bus Station

2

Curtin Stadium

Nesuto Hotel & Zamia Apartments 420

Wesfarmers Court

Edinburgh Oval

3

CURTIN STUDENT GUILD

4

Main Cafeteria

5

Curtin Connect

6

TL Robertson Library

Edinburgh Oval South

7

The Forum

Alcoa Court

Lower Henderson Court

John Curtin Gallery

Bankwest The Theatre HIVE

Upper Henderson Court

Tim Winton Lecture Theatre

Elizabeth Jolley & Norm Duffy Lecture Theatres

Hayman Theatre

Rob Riley Walk

Creative Quarter

Mediterranean Garden

Find your way with our online maps
 Online, mobile-friendly maps of Curtin Perth and Curtin Kalgoorlie campuses will ensure you'll never get lost at uni.

▶▶▶ curtin.edu/maps



For more information

Curtin University

Kent St, Bentley
Western Australia 6102

Postal Address

GPO Box U1987
Perth Western Australia 6845

Tel: 1300 222 888

Web: curtin.edu.au/study



StudyPerth represents and promotes Western Australia's internationally recognised education sector by conducting a wide range of profile-raising and marketing activities throughout the world. It is a unique consortium of 32 universities, colleges and schools in Perth which provide education services to the international community.



The Australian Technology Network of Universities (ATN) brings together five of the most innovative and enterprising universities in Australia. The ATN is recognised as a global leader of a new generation of universities focused on industry collaboration, real-world research with real-world impact and produce work-ready graduates to become global thinkers in business and the community.

Join the conversation!



facebook.com/curtinuniversity



[@curtinuniversity](https://tiktok.com/@curtinuniversity)



[@CurtinUni](https://twitter.com/CurtinUni)



科廷大学CurtinUniversity



[@curtinuniversity](https://instagram.com/curtinuniversity)



科廷大学CurtinUniversity



youtube.com/curtinuniversity



Connect with
Curtin University
through Wechat

This publication is available in alternative formats on request.

Disclaimer and copyright

This publication is correct as at June 2023 but is subject to change. In relation to courses, Curtin University may change the content, delivery, assessment methods and tuition fees; withdraw courses or limit enrolments; and vary other arrangements, including the academic area where courses are offered. For current information relevant to this publication, visit international.curtin.edu.au.

International students studying in Australia on a student visa must study full-time and meet other entry requirements, and are subject to international student fees.

This publication contains general information only. Readers should consider how it applies to their personal circumstances and seek specific advice. Subject to applicable law, Curtin University is not liable for anything done or not done in reliance on this publication.

© Curtin University 2023

CRICOS Provider Code 00301J

5529INT

curtin.edu.au